

IMPDH2-specific Polyclonal antibody

Catalog Number: 55398-1-AP

Basic Information

Catalog Number:

55398-1-AP

Size:

550 µg/ml

Source:

Rabbit

Isotype:

IgG

GenBank Accession Number:

NM_000884

GeneID (NCBI):

3615

UNIPROT ID:

P12268

Full Name:

IMP (inosine monophosphate)
dehydrogenase 2

Calculated MW:

56 kDa

Observed MW:

56 kDa

Purification Method:

Antigen affinity purification

Recommended Dilutions:

WB 1:1000-1:4000

Applications

Tested Applications:

WB, ELISA

Species Specificity:

human, mouse, rat

Positive Controls:

WB : mouse colon tissue, rat colon tissue

Background Information

IMPDH2, also named as IMPD2, belongs to the IMPDH/GMPR family. It is a rate limiting enzyme in the de novo synthesis of guanine nucleotides and therefore is involved in the regulation of cell growth. It may also have a role in the development of malignancy and the growth progression of some tumors. IMPDH2 is a key enzyme in the purine nucleotide biosynthetic pathway and constitutes a pivotal biological target for immunosuppressant and antiviral drugs. (PMID:21181270). This antibody is specific to IMPDH2.

Storage

Storage:

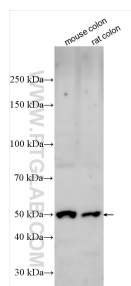
Store at -20°C. Stable for one year after shipment.

Storage Buffer:

PBS with 0.02% sodium azide and 50% glycerol pH 7.3.

Aliquoting is unnecessary for -20°C storage

Selected Validation Data



Various lysates were subjected to SDS PAGE followed by western blot with 55398-1-AP (IMPDH2-specific antibody) at dilution of 1:2000 incubated at room temperature for 1.5 hours.