

For Research Use Only

SETD2 Polyclonal antibody, PBS Only

Catalog Number: 55377-1-PBS

Featured Product



Basic Information

Catalog Number:

55377-1-PBS

Concentration:

1 mg/ml

Source:

Rabbit

Isotype:

IgG

GenBank Accession Number:

NM_014159

GeneID (NCBI):

29072

UNIPROT ID:

Q9BYW2

Full Name:

SET domain containing 2

Calculated MW:

288 kDa

Observed MW:

287 kDa

Purification Method:

Antigen affinity purification

Applications

Tested Applications:

WB, IHC, IF/ICC, IP, Indirect ELISA

Species Specificity:

human

Background Information

SETD2, also named as HIF1, HYPB, KIAA1732, KMT3A, SET2, p231HBP, hSET2 and HIP-1, belongs to the histone-lysine methyltransferase family and SET2 subfamily. It is a histone methyltransferase that methylates 'Lys-36' of histone H3. SETD2 probably plays a role in chromatin structure modulation during elongation via its interaction with hyperphosphorylated POLR2A. It binds DNA at promoters. SETD2 may also act as a transcription activator that binds to promoters.(PMID:16118227) It is a potential tumor suppressor gene in breast cancer.(PMID:20944102) This antibody is specific to SETD2.

Storage

Storage:

Store at -80°C.

The product is shipped with ice packs. Upon receipt, store it immediately at -80°C

Storage Buffer:

PBS only, pH7.3

For technical support and original validation data for this product please contact:

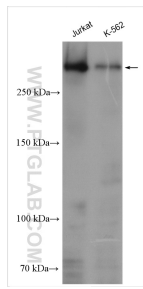
T: 4006900926

E: Proteintech-CN@ptglab.com

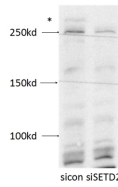
W: ptgcn.com

This product is exclusively available under Proteintech Group brand and is not available to purchase from any other manufacturer.

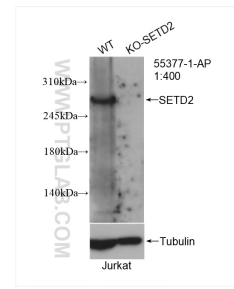
Selected Validation Data



Various lysates were subjected to SDS PAGE followed by western blot with 55377-1-AP (SETD2 antibody) at dilution of 1:500 incubated at room temperature for 1.5 hours. This data was developed using the same antibody clone with 55377-1-PBS in a different storage buffer formulation.

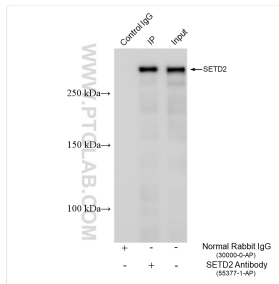


Negative control or SETD2 specific siRNAs were transfected into U2-OS cells with the final concentration of 20 nM. Forty eight hours after transfection, cells were lysed with RIPA buffer and subjected to SDS PAGE. The antibody dilution used for western blot was 1:500.

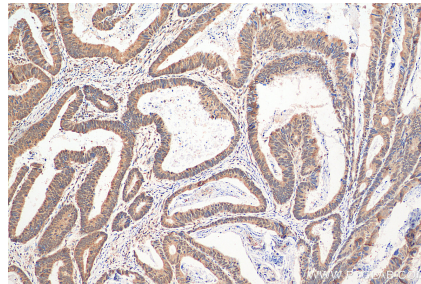


WB result of SETD2 antibody (55377-1-AP; 1:500) with siRNA transfected U2-OS cells. This data was developed using the same antibody clone with 55377-1-PBS in a different storage buffer formulation.

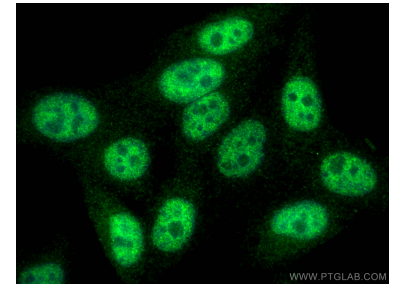
WB result of SETD2 antibody (55377-1-AP; 1:400; room temperature for 1.5 hours) with wild-type and SETD2 knockout Jurkat cells. This data was developed using the same antibody clone with 55377-1-PBS in a different storage buffer formulation.



IP result of anti-SETD2 (IP:55377-1-AP, 4ug; Detection:55377-1-AP 1:800) with Jurkat cells lysate 1360 ug. This data was developed using the same antibody clone with 55377-1-PBS in a different storage buffer formulation.



Immunohistochemical analysis of paraffin-embedded human colon cancer tissue slide using 55377-1-AP (SETD2 antibody) at dilution of 1:200 (under 10x lens). Heat mediated antigen retrieval with Tris-EDTA buffer (pH 9.0). This data was developed using the same antibody clone with 55377-1-PBS in a different storage buffer formulation.



Immunofluorescent analysis of (4% PFA) fixed HepG2 cells using SETD2 antibody (55377-1-AP) at dilution of 1:400 and CoraLite®488-Conjugated AffiniPure Goat Anti-Rabbit IgG(H+L). This data was developed using the same antibody clone with 55377-1-PBS in a different storage buffer formulation.