

For Research Use Only

FOXC1 Polyclonal antibody

Catalog Number: 55365-1-AP

Featured Product

6 Publications



Basic Information

Catalog Number:

55365-1-AP

Size:

1000 µg/ml

Source:

Rabbit

Isotype:

IgG

GenBank Accession Number:

NM_001453

GeneID (NCBI):

2296

UNIPROT ID:

Q12948

Full Name:

forkhead box C1

Calculated MW:

57 kDa

Observed MW:

70 kDa

Purification Method:

Antigen affinity purification

Recommended Dilutions:

WB 1:200-1:1000

IP 0.5-4.0 µg for 1.0-3.0 mg of total protein lysate

Applications

Tested Applications:

IP, WB, ELISA

Cited Applications:

WB, IHC, CoIP, IF

Species Specificity:

human, mouse

Cited Species:

human, mouse

Positive Controls:

WB : MCF-7 cells, HEK-293 cells, HepG2 cells

IP : HepG2 cells,

Background Information

FOXC1, also named as FKHL7 and FREAC3, binding of FREAC-3 and FREAC-4 to their cognate sites results in bending of the DNA at an angle of 80-90 degrees. Defects in FOXC1 are the cause of Axenfeld-Rieger syndrome type 3 (RIEG3). Defects in FOXC1 are the cause of iridogoniodysgenesis anomaly (IGDA). Defects in FOXC1 are a cause of Peters anomaly. This antibody is specific to FOXC1. Phosphorylation modification of Foxc1 protein may be responsible for the larger molecular weight of detection compared with theoretical molecular weight (PMID:27708239;16403239).

Notable Publications

Author	Pubmed ID	Journal	Application
Qinchen Cao	30431099	Mol Med Rep	WB
Yu-Zhong Xu	28635400	Tumour Biol	WB
Ya Wang	34461284	Bone	WB

Storage

Storage:

Store at -20°C.

Storage Buffer:

PBS with 0.02% sodium azide and 50% glycerol pH 7.3.

Aliquoting is unnecessary for -20°C storage

For technical support and original validation data for this product please contact:

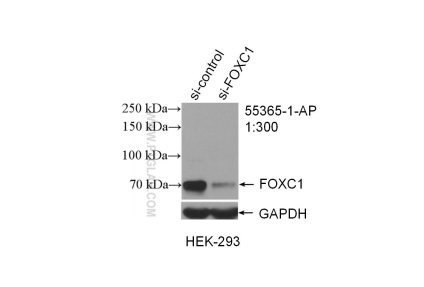
T: 4006900926

E: Proteintech-CN@ptglab.com

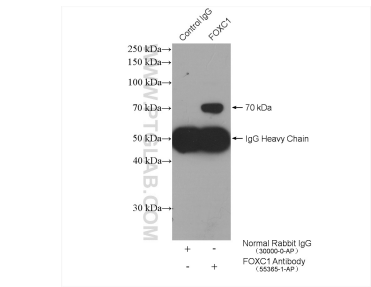
W: ptgcn.com

This product is exclusively available under Proteintech Group brand and is not available to purchase from any other manufacturer.

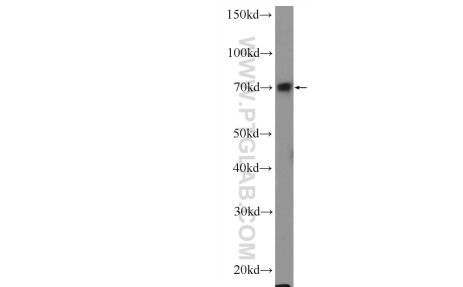
Selected Validation Data



WB result of FOXC1 antibody (55365-1-AP; 1:300; incubated at room temperature for 1.5 hours) with sh-Control and sh-FOXC1 transfected HEK-293 cells.



IP result of anti-FOXC1 (IP: 55365-1-AP, 4ug; Detection: 55365-1-AP 1:300) with HepG2 cells lysate 4000 ug.



MCF-7 cells were subjected to SDS PAGE followed by western blot with 55365-1-AP (FOXC1 Antibody) at dilution of 1:300 incubated at room temperature for 1.5 hours.