

For Research Use Only

CHRNE Polyclonal antibody

Catalog Number: 55360-1-AP



Basic Information

Catalog Number:

55360-1-AP

Size:

600 ug/ml

Source:

Rabbit

Isotype:

IgG

GenBank Accession Number:

NM_000080

GeneID (NCBI):

1145

UNIPROT ID:

Q04844

Full Name:

cholinergic receptor, nicotinic, epsilon

Calculated MW:

55 kDa

Observed MW:

40-50 kDa

Purification Method:

Antigen affinity purification

Recommended Dilutions:

WB 1:500-1:1000

Applications

Tested Applications:

WB, ELISA

Species Specificity:

human, mouse, rat

Positive Controls:

WB : mouse heart tissue, rat heart tissue

Background Information

Acetylcholine receptor subunit epsilon is a protein that in humans is encoded by the CHRNE gene. Acetylcholine receptors at mature mammalian neuromuscular junctions are pentameric protein complexes composed of four subunits in the ratio of two alpha subunits to one beta, one epsilon, and one delta subunit. The acetylcholine receptor changes subunit composition shortly after birth when the epsilon subunit replaces the gamma subunit seen in embryonic receptors. Mutations in the epsilon subunit are associated with congenital myasthenic syndrome.

Storage

Storage:

Store at -20°C. Stable for one year after shipment.

Storage Buffer:

PBS with 0.02% sodium azide and 50% glycerol pH 7.3.

Aliquoting is unnecessary for -20°C storage

For technical support and original validation data for this product please contact:

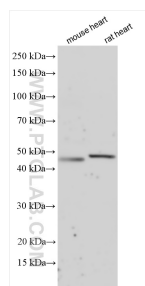
T: 4006900926

E: Proteintech-CN@ptglab.com

W: ptgcn.com

This product is exclusively available under Proteintech Group brand and is not available to purchase from any other manufacturer.

Selected Validation Data



Various lysates were subjected to SDS PAGE followed by western blot with 55360-1-AP (CHRNA1 antibody) at dilution of 1:800 incubated at room temperature for 1.5 hours.