

For Research Use Only

# SIDT1 Polyclonal antibody, PBS Only

Catalog Number: 55352-1-PBS



## Basic Information

Catalog Number:

55352-1-PBS

Size:

1 mg/ml

Source:

Rabbit

Isotype:

IgG

GenBank Accession Number:

NM\_017699

GeneID (NCBI):

54847

UNIPROT ID:

Q9NXL6

Full Name:

SID1 transmembrane family, member 1

Calculated MW:

94 kDa

Observed MW:

95-110 kDa

Purification Method:

Antigen affinity purification

## Applications

Tested Applications:

WB, IHC, IF/ICC, Indirect ELISA

Species Specificity:

human, mouse

## Background Information

SIDT1, also known as a human orthologue of SID-1, belongs to the SID family which is a highly conserved group of transmembrane channel-like proteins. As a transmembrane channel for intercellular communication, SIDT1 was found to facilitate small interfering RNA (siRNA) or miRNA uptake and also involved in cholesterol transport in human systems. SIDT1 mRNA and protein were mainly detected in the stomach and large intestine (including the cecum, colon and rectum) but not in the small intestine (especially the duodenum). Notably, SIDT1 was mainly located in gastric surface mucous cells (pit cells) but barely expressed in the parietal or chief cells. The SIDT1 gene encodes an 827 amino acid protein with a calculated molecular mass of 94 kDa. (PMID: 31632087, PMID: 32801357, PMID: 22174421)

## Storage

Storage:

Store at -80°C.

**The product is shipped with ice packs. Upon receipt, store it immediately at -80°C**

Storage Buffer:

PBS Only

For technical support and original validation data for this product please contact:

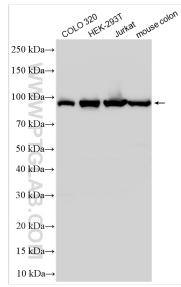
T: 4006900926

E: [Proteintech-CN@ptglab.com](mailto:Proteintech-CN@ptglab.com)

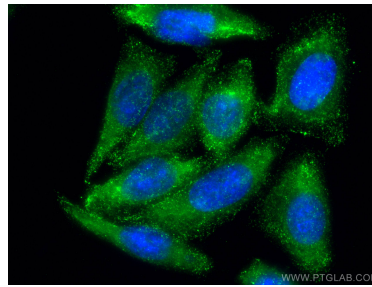
W: [ptgcn.com](http://ptgcn.com)

**This product is exclusively available under Proteintech Group brand and is not available to purchase from any other manufacturer.**

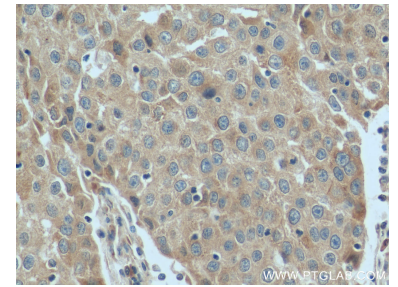
## Selected Validation Data



Various lysates were subjected to SDS PAGE followed by western blot with 55352-1-AP (SIDT1 antibody) at dilution of 1:2000 incubated at room temperature for 1.5 hours. This data was developed using the same antibody clone with 55352-1-PBS in a different storage buffer formulation.



Immunofluorescent analysis of (-20°C Methanol) fixed HepG2 cells using SIDT1 antibody (55352-1-AP) at dilution of 1:200 and CoraLite®488-Conjugated AffiniPure Goat Anti-Rabbit IgG(H+L). This data was developed using the same antibody clone with 55352-1-PBS in a different storage buffer formulation.



Immunohistochemical analysis of paraffin-embedded human breast cancer tissue slide using 55352-1-AP (SIDT1 antibody) at dilution of 1:200 (under 40x lens). Heat mediated antigen retrieval with Tris-EDTA buffer (pH 9.0). This data was developed using the same antibody clone with 55352-1-PBS in a different storage buffer formulation.