

For Research Use Only

STK38 Polyclonal antibody, PBS Only

Catalog Number: 55335-1-PBS



Basic Information

Catalog Number:

55335-1-PBS

Size:

1 mg/ml

Source:

Rabbit

Isotype:

IgG

GenBank Accession Number:

NM_007271

GeneID (NCBI):

11329

UNIPROT ID:

Q15208

Full Name:

serine/threonine kinase 38

Calculated MW:

54 kDa

Observed MW:

54 kDa

Purification Method:

Antigen affinity purification

Applications

Tested Applications:

WB, IHC, IF/ICC, Indirect ELISA

Species Specificity:

human, mouse

Background Information

Serine/threonine-protein kinase 38 belongs to AGC Ser/Thr protein kinase family. STK38 implicates in cell proliferation and/or tumor progression, and might play a role in the HIV-1 life cycle. Researches showed that STK38 with STK38L, were proapoptotic kinases and key members of the RASSF1/STK4 signaling cascade and its kinase activity increased in early mitotic phase and was dependent on FRY and STK3. This antibody recognizes the C-terminal of STK38.

Storage

Storage:

Store at -80°C.

The product is shipped with ice packs. Upon receipt, store it immediately at -80°C

Storage Buffer:

PBS Only

For technical support and original validation data for this product please contact:

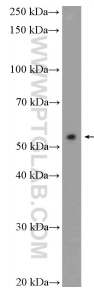
T: 4006900926

E: Proteintech-CN@ptglab.com

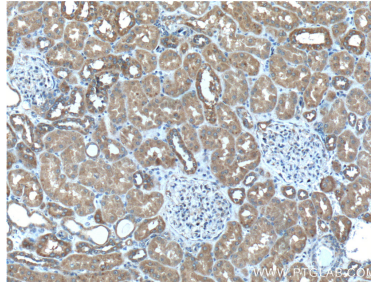
W: ptgcn.com

This product is exclusively available under Proteintech Group brand and is not available to purchase from any other manufacturer.

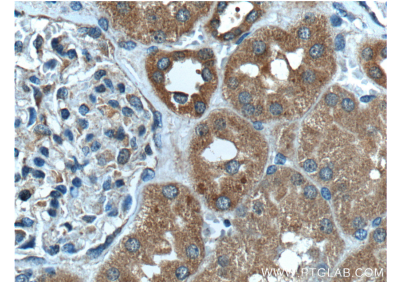
Selected Validation Data



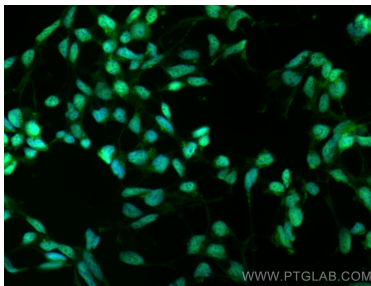
MCF-7 cells were subjected to SDS PAGE followed by western blot with 55335-1-AP (STK38 Antibody) at dilution of 1:1000 incubated at room temperature for 1.5 hours. This data was developed using the same antibody clone with 55335-1-PBS in a different storage buffer formulation.



Immunohistochemical analysis of paraffin-embedded human kidney tissue slide using 55335-1-AP (STK38 Antibody) at dilution of 1:200 (under 10x lens). This data was developed using the same antibody clone with 55335-1-PBS in a different storage buffer formulation.



Immunohistochemical analysis of paraffin-embedded human kidney tissue slide using 55335-1-AP (STK38 Antibody) at dilution of 1:200 (under 40x lens). This data was developed using the same antibody clone with 55335-1-PBS in a different storage buffer formulation.



Immunofluorescent analysis of (4% PFA) fixed HEK-293 cells using STK38 antibody (55335-1-AP) at dilution of 1:400 and Multi-rAb CoraLite® Plus 488-Goat Anti-Rabbit Recombinant Secondary Antibody (H+L) (RGAR002). This data was developed using the same antibody clone with 55335-1-PBS in a different storage buffer formulation.