

For Research Use Only

STK38 Polyclonal antibody

Catalog Number: 55335-1-AP

4 Publications



Basic Information

Catalog Number:

55335-1-AP

Source:

Rabbit

Isotype:

IgG

GenBank Accession Number:

NM_007271

GeneID (NCBI):

11329

UNIPROT ID:

Q15208

Full Name:

serine/threonine kinase 38

Calculated MW:

54 kDa

Observed MW:

54 kDa

Purification Method:

Antigen affinity purification

Recommended Dilutions:

WB: 1:500-1:2000

IHC: 1:100-1:400

IF/ICC: 1:200-1:800

Applications

Tested Applications:

WB, IHC, IF/ICC, ELISA

Cited Applications:

WB, IHC, IF, IP

Species Specificity:

human, mouse

Cited Species:

human, mouse

Note-IHC: suggested antigen retrieval with TE buffer pH 9.0; (*) Alternatively, antigen retrieval may be performed with citrate buffer pH 6.0

Positive Controls:

WB : MCF-7 cells, HeLa cells

IHC : human kidney tissue, human breast cancer tissue

IF/ICC : HEK-293 cells,

Background Information

Serine/threonine-protein kinase 38 belongs to AGC Ser/Thr protein kinase family. STK38 implicates in cell proliferation and/or tumor progression, and might play a role in the HIV-1 life cycle. Researches showed that STK38 with STK38L, were proapoptotic kinases and key members of the RASSF1/STK4 signaling cascade and its kinase activity increased in early mitotic phase and was dependent on FRY and STK3. This antibody recognizes the C-terminal of STK38.

Notable Publications

Author	Pubmed ID	Journal	Application
Xuejuan Gao	36511424	J Proteome Res	WB, IF
Kuangen Zhang	33852174	J Cell Biochem	IF, WB, IHC
Yiran Shi	40526468	Cell Rep	WB

Storage

Storage:

Store at -20°C. Stable for one year after shipment.

Storage Buffer:

PBS with 0.02% sodium azide and 50% glycerol, pH7.3

Aliquoting is unnecessary for -20°C storage

For technical support and original validation data for this product please contact:

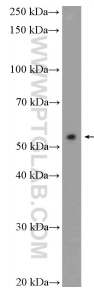
T: 4006900926

E: Proteintech-CN@ptglab.com

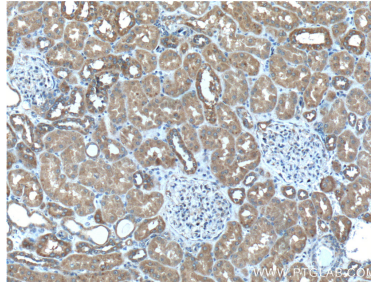
W: ptgcn.com

This product is exclusively available under Proteintech Group brand and is not available to purchase from any other manufacturer.

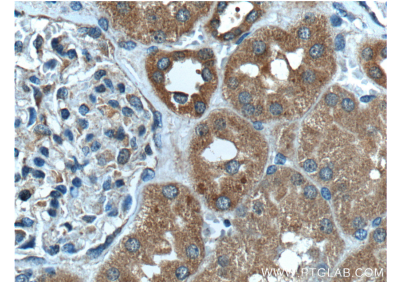
Selected Validation Data



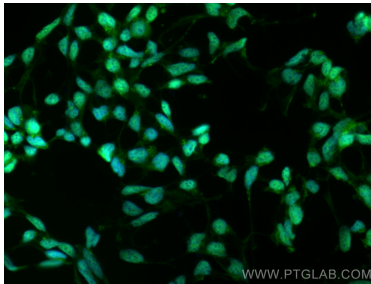
MCF-7 cells were subjected to SDS PAGE followed by western blot with 55335-1-AP (STK38 Antibody) at dilution of 1:1000 incubated at room temperature for 1.5 hours.



Immunohistochemical analysis of paraffin-embedded human kidney tissue slide using 55335-1-AP (STK38 Antibody) at dilution of 1:200 (under 10x lens).



Immunohistochemical analysis of paraffin-embedded human kidney tissue slide using 55335-1-AP (STK38 Antibody) at dilution of 1:200 (under 40x lens).



Immunofluorescent analysis of (4% PFA) fixed HEK-293 cells using STK38 antibody (55335-1-AP) at dilution of 1:400 and Multi-rAb CoraLite® Plus 488-Goat Anti-Rabbit Recombinant Secondary Antibody (H+L) (RGAR002).