

For Research Use Only

# QSER1 Polyclonal antibody

Catalog Number:55326-1-AP



## Basic Information

Catalog Number:

55326-1-AP

Source:

Rabbit

Isotype:

IgG

GenBank Accession Number:

NM\_001076786

GeneID (NCBI):

79832

UNIPROT ID:

Q2KHR3

Full Name:

glutamine and serine rich 1

Calculated MW:

190 kDa

Purification Method:

Antigen affinity purification

Recommended Dilutions:

IHC: 1:50-1:500

IF/ICC: 1:200-1:800

## Applications

Tested Applications:

IHC, IF/ICC, ELISA

Species Specificity:

human

Positive Controls:

IHC : human pancreas cancer tissue,

IF/ICC : HeLa cells,

**Note-IHC: suggested antigen retrieval with TE buffer pH 9.0; (\*) Alternatively, antigen retrieval may be performed with citrate buffer pH 6.0**

## Background Information

QSER1, a recently characterized protein, whose activity has been tightly associated with the protection of DNA methylation sites in hESCs. QSER1 is widely up-regulated in multiple cancers, and its up-regulation correlates with poor clinic outcomes (PMID: 36371602). QSER1 depletion leads to NODAL de-repression and associates with increased RNA Polymerase II occupancy at YAP1bound enhancers, pointing to a QSER1 contribution maintaining low transcriptional activity on certain genomic regions (PMID: 33833093, 35210841).

## Storage

Storage:

Store at -20°C. Stable for one year after shipment.

Storage Buffer:

PBS with 0.02% sodium azide and 50% glycerol, pH7.3

Aliquoting is unnecessary for -20°C storage

For technical support and original validation data for this product please contact:

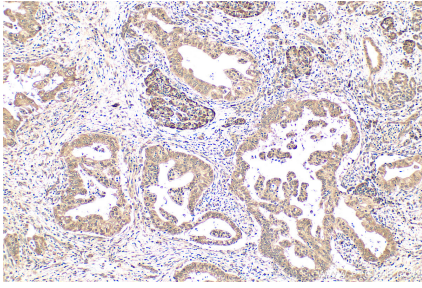
T: 4006900926

E: Proteintech-CN@ptglab.com

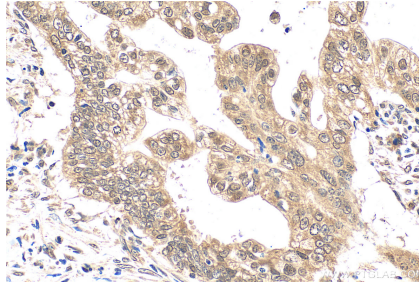
W: ptgcn.com

**This product is exclusively available under Proteintech Group brand and is not available to purchase from any other manufacturer.**

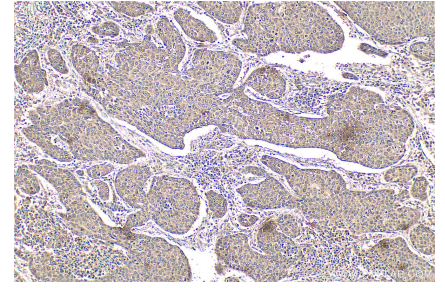
## Selected Validation Data



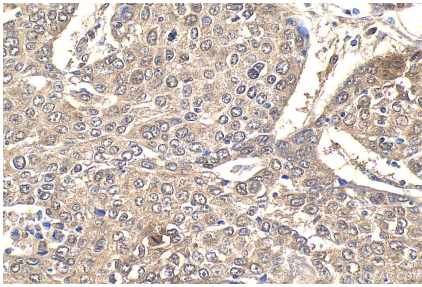
Immunohistochemical analysis of paraffin-embedded human pancreas cancer tissue slide using 55326-1-AP (QSER1 antibody) at dilution of 1:200 (under 10x lens). Heat mediated antigen retrieval with Tris-EDTA buffer (pH 9.0).



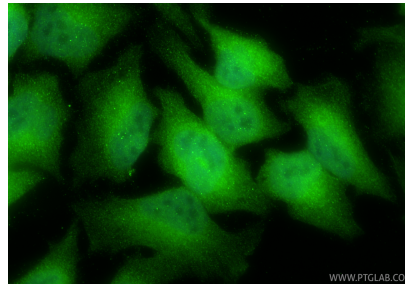
Immunohistochemical analysis of paraffin-embedded human pancreas cancer tissue slide using 55326-1-AP (QSER1 antibody) at dilution of 1:200 (under 40x lens). Heat mediated antigen retrieval with Tris-EDTA buffer (pH 9.0).



Immunohistochemical analysis of paraffin-embedded human lung cancer tissue slide using 55326-1-AP (QSER1 antibody) at dilution of 1:600 (under 10x lens). Heat mediated antigen retrieval with Tris-EDTA buffer (pH 9.0).



Immunohistochemical analysis of paraffin-embedded human lung cancer tissue slide using 55326-1-AP (QSER1 antibody) at dilution of 1:600 (under 40x lens). Heat mediated antigen retrieval with Tris-EDTA buffer (pH 9.0).



Immunofluorescent analysis of (4% PFA) fixed HeLa cells using QSER1 antibody (55326-1-AP) at dilution of 1:400 and CoraLite@488-Conjugated Goat Anti-Rabbit IgG(H+L) (SA00013-2).