

For Research Use Only

TAL1 Polyclonal antibody

Catalog Number: 55317-1-AP

2 Publications



Basic Information

Catalog Number:

55317-1-AP

Concentration:

600 µg/ml

Source:

Rabbit

Isotype:

IgG

GenBank Accession Number:

NM_003189

GeneID (NCBI):

6886

UNIPROT ID:

P17542

Full Name:

T-cell acute lymphocytic leukemia 1

Calculated MW:

34 kDa

Observed MW:

40-44 kDa

Purification Method:

Antigen affinity purification

Recommended Dilutions:

WB 1:500-1:2000

IP 0.5-4.0 µg for 1.0-3.0 mg of total protein lysate

Applications

Tested Applications:

WB, IP, ELISA

Cited Applications:

WB

Species Specificity:

human, mouse

Cited Species:

human, zebrafish

Positive Controls:

WB : Raji cells, Jurkat cells

IP : Raji cells,

Background Information

T-cell acute lymphocytic leukemia protein 1 (TAL1) also named Stem cell protein, T-cell leukemia/lymphoma protein 5. It is specifically expressed in leukemic stem cell, implicated in the genesis of hemopoietic malignancies. It may play an important role in hemopoietic differentiation, serving as a positive regulator of erythroid differentiation. The 38kd, 44kd bands recognized by antibody are the phosphorylated forms of TAL1 and its isoforms.

Notable Publications

Author	Pubmed ID	Journal	Application
Xin Yang	36297316	Pharmaceuticals (Basel)	WB
WenYe Liu	38940293	Development	WB

Storage

Storage:

Store at -20°C.

Storage Buffer:

PBS with 0.02% sodium azide and 50% glycerol pH 7.3.

Aliquoting is unnecessary for -20°C storage

For technical support and original validation data for this product please contact:

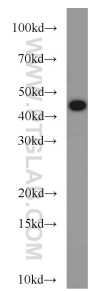
T: 4006900926

E: Proteintech-CN@ptglab.com

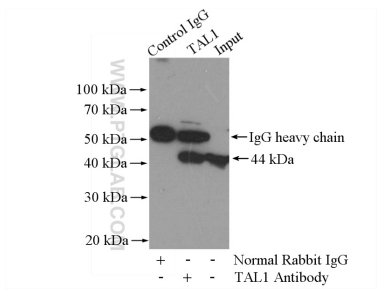
W: ptgcn.com

This product is exclusively available under Proteintech Group brand and is not available to purchase from any other manufacturer.

Selected Validation Data



Raji cells were subjected to SDS PAGE followed by western blot with 55317-1-AP (TAL1 antibody) at dilution of 1:1000 incubated at room temperature for 1.5 hours.



IP result of anti-TAL1 (IP:55317-1-AP, 4ug;
Detection:55317-1-AP 1:1000) with Raji cells lysate
2000ug.