

For Research Use Only

# PDE2A Polyclonal antibody

Catalog Number: 55306-1-AP

Featured Product

9 Publications



## Basic Information

### Catalog Number:

55306-1-AP

### Size:

550 µg/ml

### Source:

Rabbit

### Isotype:

IgG

### GenBank Accession Number:

NM\_002599

### GeneID (NCBI):

5138

### UNIPROT ID:

O00408

### Full Name:

phosphodiesterase 2A, cGMP-stimulated

### Calculated MW:

106 kDa

### Observed MW:

100-106 kDa

### Purification Method:

Antigen affinity purification

### Recommended Dilutions:

WB 1:500-1:2000

IP 0.5-4.0 µg for 1.0-3.0 mg of total protein lysate

IHC 1:20-1:200

## Applications

### Tested Applications:

IHC, IP, WB, ELISA

### Cited Applications:

WB, IF, IHC

### Species Specificity:

human, mouse, rat

### Cited Species:

human, mouse, rat

**Note-IHC: suggested antigen retrieval with TE buffer pH 9.0; (\*) Alternatively, antigen retrieval may be performed with citrate buffer pH 6.0**

### Positive Controls:

WB: mouse brain tissue, mouse heart tissue

IP: mouse brain tissue,

IHC: human kidney tissue, human liver cancer tissue

## Background Information

PDE2A, also named as cGSPDE and CGS-PDE, belongs to the cyclic nucleotide phosphodiesterase family and PDE2 subfamily. It is a cyclic nucleotide phosphodiesterase with a dual-specificity for the second messengers cAMP and cGMP, which are key regulators of many important physiological processes. This antibody is specific to PDE2A.

## Notable Publications

Author	Pubmed ID	Journal	Application
Miguel J Lobo	33087821	Commun Biol	WB,IF
Xiang Gui	36252813	Thromb Haemost	WB
Kun Liu	29720569	JCI Insight	WB

## Storage

### Storage:

Store at -20°C. Stable for one year after shipment.

### Storage Buffer:

PBS with 0.02% sodium azide and 50% glycerol pH 7.3.

Aliquoting is unnecessary for -20°C storage

For technical support and original validation data for this product please contact:

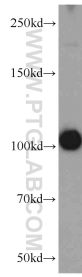
T: 4006900926

E: Proteintech-CN@ptglab.com

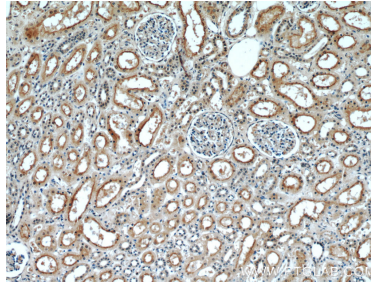
W: ptgcn.com

This product is exclusively available under Proteintech Group brand and is not available to purchase from any other manufacturer.

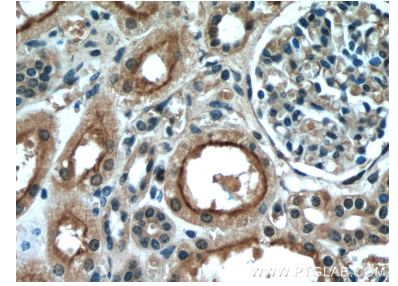
## Selected Validation Data



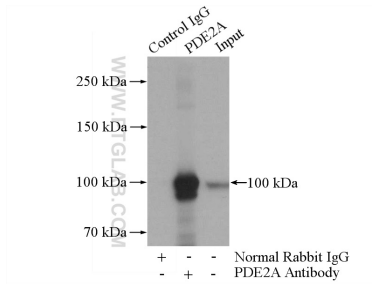
mouse brain tissue were subjected to SDS PAGE followed by western blot with 55306-1-AP (PDE2A antibody) at dilution of 1:1000 incubated at room temperature for 1.5 hours.



Immunohistochemical analysis of paraffin-embedded human kidney using 55306-1-AP (PDE2A antibody) at dilution of 1:50 (under 10x lens).



Immunohistochemical analysis of paraffin-embedded human kidney using 55306-1-AP (PDE2A antibody) at dilution of 1:50 (under 40x lens).



IP result of anti-PDE2A (IP:55306-1-AP, 4ug; Detection:55306-1-AP 1:500) with mouse brain tissue lysate 3440ug.