

For Research Use Only

# ZGLP1 Polyclonal antibody

Catalog Number: 55292-1-AP



## Basic Information

<b>Catalog Number:</b> 55292-1-AP	<b>GenBank Accession Number:</b> NM_001103167	<b>Purification Method:</b> Antigen affinity purification
<b>Size:</b> 1000 µg/ml	<b>GeneID (NCBI):</b> 100125288	<b>Recommended Dilutions:</b> WB 1:200-1:1000 IHC 1:20-1:200
<b>Source:</b> Rabbit	<b>UNIPROT ID:</b> POC6A0	
<b>Isotype:</b> IgG	<b>Full Name:</b> GATA like protein-1	
	<b>Calculated MW:</b> 30 kDa	
	<b>Observed MW:</b> 30 kDa	

## Applications

<b>Tested Applications:</b> IHC, WB, ELISA	<b>Positive Controls:</b> WB : mouse ovary tissue, IHC : human ovary tissue,
<b>Species Specificity:</b> human, mouse	
<b>Note-IHC: suggested antigen retrieval with TE buffer pH 9.0; (*) Alternatively, antigen retrieval may be performed with citrate buffer pH 6.0</b>	

## Background Information

ZGLP1, also known as GLP-1, is a nuclear protein containing two zinc fingers, one of which is highly homologous to the conserved GATA zinc finger DNA binding motif. It is a transcriptional repressor that plays a central role in somatic cells of the gonad and is required for germ cell development.

## Storage

**Storage:**  
Store at -20°C.  
**Storage Buffer:**  
PBS with 0.02% sodium azide and 50% glycerol pH 7.3.  
Aliquoting is unnecessary for -20°C storage

For technical support and original validation data for this product please contact:

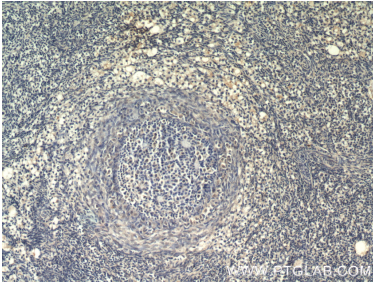
T: 4006900926

E: [Proteintech-CN@ptglab.com](mailto:Proteintech-CN@ptglab.com)

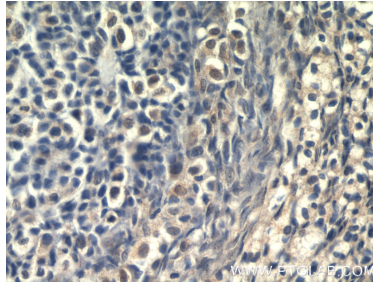
W: [ptgcn.com](http://ptgcn.com)

**This product is exclusively available under Proteintech Group brand and is not available to purchase from any other manufacturer.**

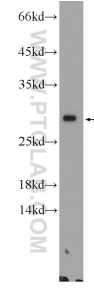
## Selected Validation Data



Immunohistochemical analysis of paraffin-embedded human ovary using 55292-1-AP (GLP1 antibody) at dilution of 1:50 (under 10x lens).



Immunohistochemical analysis of paraffin-embedded human ovary using 55292-1-AP (GLP1 antibody) at dilution of 1:50 (under 40x lens).



mouse ovary tissue were subjected to SDS PAGE followed by western blot with 55292-1-AP (ZGLP1 Antibody) at dilution of 1:300 incubated at room temperature for 1.5 hours.