

For Research Use Only

# MMP21 Polyclonal antibody

Catalog Number: 55289-1-AP **3 Publications**



## Basic Information

**Catalog Number:**

55289-1-AP

**Size:**

1000 µg/ml

**Source:**

Rabbit

**Isotype:**

IgG

**GenBank Accession Number:**

NM\_147191

**GeneID (NCBI):**

118856

**UNIPROT ID:**

Q8N119

**Full Name:**

matrix metalloproteinase 21

**Calculated MW:**

65 kDa

**Observed MW:**

67 kDa

**Purification Method:**

Antigen affinity purification

**Recommended Dilutions:**

WB 1:500-1:1000

IF 1:20-1:200

## Applications

**Tested Applications:**

IF/ICC, WB, ELISA

**Cited Applications:**

WB, IF, IHC

**Species Specificity:**

human, mouse

**Cited Species:**

human, mouse

**Positive Controls:**

WB : mouse liver tissue, L02 cells

IF : L02 cells,

## Background Information

MMP21 belongs to the peptidase M10A family. It may have an important and specific function in tumor progression and embryogenesis. It cleaves alpha-1-antitrypsin. The proenzyme without the signal peptide has a calculated molecular mass of 62 kD; following activation by furin, the processed enzyme has a calculated molecular mass of 49 kD (PMID:12617721), and MMP21 protein was detected in fetal neuroectoderm, in placenta, and in leukocytes (OMIM). This antibody is specific to MMP21.

## Notable Publications

Author	Pubmed ID	Journal	Application
Xi-Ji Qin	36123719	Hum Genomics	WB
Jiangfan Zhou	35398966	Cancer Sci	WB, IHC
Kazuki Nakai	37923722	Nat Commun	IF

## Storage

**Storage:**

Store at -20°C.

**Storage Buffer:**

PBS with 0.02% sodium azide and 50% glycerol pH 7.3.

Aliquoting is unnecessary for -20°C storage

For technical support and original validation data for this product please contact:

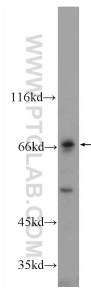
T: 4006900926

E: Proteintech-CN@ptglab.com

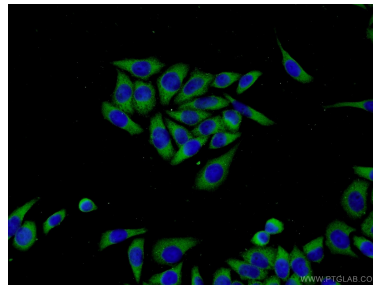
W: ptgcn.com

**This product is exclusively available under Proteintech Group brand and is not available to purchase from any other manufacturer.**

## Selected Validation Data



mouse liver tissue were subjected to SDS PAGE followed by western blot with 55289-1-AP (MMP21 Antibody) at dilution of 1:600 incubated at room temperature for 1.5 hours.



Immunofluorescent analysis of L02 cells using 55289-1-AP (MMP21 antibody) at dilution of 1:50 and Alexa Fluor 488-conjugated AffiniPure Goat Anti-Rabbit IgG(H+L).