

For Research Use Only

FKBP15 Polyclonal antibody, PBS Only

Catalog Number:55285-1-PBS



Basic Information

Catalog Number: 55285-1-PBS	GenBank Accession Number: NM_015258	Purification Method: Antigen affinity purification
Concentration: 1 mg/ml	GeneID (NCBI): 23307	
Source: Rabbit	UNIPROT ID: Q5T1M5	
Isotype: IgG	Full Name: FK506 binding protein 15, 133kDa	
	Calculated MW: 134 kDa	
	Observed MW: 133-140 kDa	

Applications

Tested Applications:
WB, Indirect ELISA

Species Specificity:
human, mouse

Background Information

FKBP15 (FK506-binding protein 15) is a member of the FKBP (FK506-binding protein) family, a group of highly conserved proteins characterized by their peptidyl-prolyl isomerase (PPIase) activity. These proteins play critical roles in protein folding, cellular signaling, and chaperone functions by catalyzing the cis-trans isomerization of proline residues in peptides and proteins.

Storage

Storage:
Store at -80°C.
The product is shipped with ice packs. Upon receipt, store it immediately at -80°C

Storage Buffer:
PBS only, pH7.3

For technical support and original validation data for this product please contact:

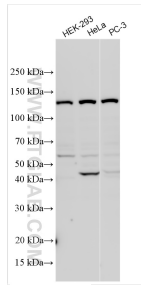
T: 4006900926

E: Proteintech-CN@ptglab.com

W: ptgcn.com

This product is exclusively available under Proteintech Group brand and is not available to purchase from any other manufacturer.

Selected Validation Data



Various lysates were subjected to SDS PAGE followed by western blot with 55285-1-AP (FKBP15 antibody) at dilution of 1:200 incubated at room temperature for 1.5 hours. This data was developed using the same antibody clone with 55285-1-PBS in a different storage buffer formulation.