

For Research Use Only

FKBP15 Polyclonal antibody

Catalog Number:55285-1-AP



Basic Information

Catalog Number:

55285-1-AP

Concentration:

400 ug/ml

Source:

Rabbit

Isotype:

IgG

GenBank Accession Number:

NM_015258

GeneID (NCBI):

23307

UNIPROT ID:

Q5T1M5

Full Name:

FK506 binding protein 15, 133kDa

Calculated MW:

134 kDa

Observed MW:

133-140 kDa

Purification Method:

Antigen affinity purification

Recommended Dilutions:

WB 1:200-1:1000

Applications

Tested Applications:

WB, ELISA

Species Specificity:

human, mouse

Positive Controls:

WB : HEK-293 cells, HeLa cells, PC-3 cells

Background Information

FKBP15 (FK506-binding protein 15) is a member of the FKBP (FK506-binding protein) family, a group of highly conserved proteins characterized by their peptidyl-prolyl isomerase (PPIase) activity. These proteins play critical roles in protein folding, cellular signaling, and chaperone functions by catalyzing the cis-trans isomerization of proline residues in peptides and proteins.

Storage

Storage:

Store at -20°C. Stable for one year after shipment.

Storage Buffer:

PBS with 0.02% sodium azide and 50% glycerol, pH7.3

Aliquoting is unnecessary for -20°C storage

For technical support and original validation data for this product please contact:

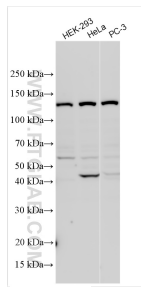
T: 4006900926

E: Proteintech-CN@ptglab.com

W: ptgcn.com

This product is exclusively available under Proteintech Group brand and is not available to purchase from any other manufacturer.

Selected Validation Data



Various lysates were subjected to SDS PAGE followed by western blot with 55285-1-AP (FKBP15 antibody) at dilution of 1:200 incubated at room temperature for 1.5 hours.