

For Research Use Only

# CTAGE5 Polyclonal antibody, PBS Only

Catalog Number: 55279-1-PBS

Featured Product



## Basic Information

Catalog Number:

55279-1-PBS

Source:

Rabbit

Isotype:

IgG

GenBank Accession Number:

NM\_005930

GeneID (NCBI):

4253

UNIPROT ID:

Q96PC5

Full Name:

CTAGE family, member 5

Calculated MW:

92 kDa

Observed MW:

100-110 kDa

Purification Method:

Antigen affinity purification

## Applications

Tested Applications:

WB, IHC, Indirect ELISA

Species Specificity:

human

## Background Information

Cutaneous T cell lymphoma-associated antigen 5 (CTAGE5) is a member of the cTAGE family. CTAGE5 is a tumor-associated antigen and is overexpressed in various cancer cell lines. CTAGE5 consists of a signal anchor motif, a single transmembrane domain, two coiled-coil motifs, and a proline-rich domain (PRD) from the N-terminus. CTAGE5 interacts with TANGO1 through its second coil region to form a cargo receptor complex (PMID: 21525241). This antibody is specific to CTAGE5. It can recognize all the isoforms except isoform 5B.

## Storage

Storage:

Store at  $-80^{\circ}\text{C}$ .

**The product is shipped with ice packs. Upon receipt, store it immediately at  $-80^{\circ}\text{C}$**

Storage Buffer:

PBS only, pH7.3

For technical support and original validation data for this product please contact:

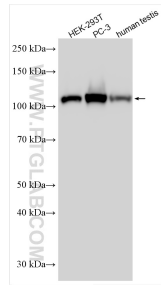
T: 4006900926

E: [Proteintech-CN@ptglab.com](mailto:Proteintech-CN@ptglab.com)

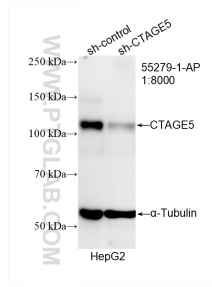
W: [ptgcn.com](http://ptgcn.com)

**This product is exclusively available under Proteintech Group brand and is not available to purchase from any other manufacturer.**

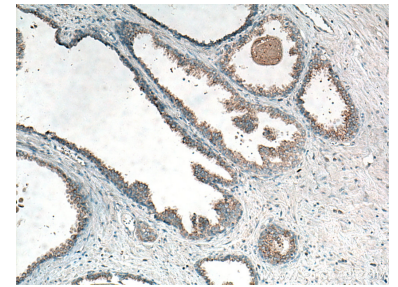
## Selected Validation Data



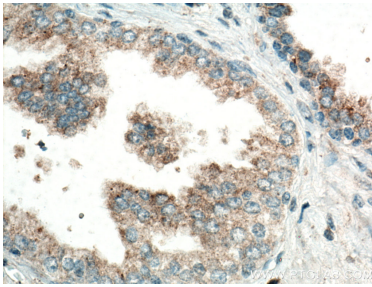
Various lysates were subjected to SDS PAGE followed by western blot with 55279-1-AP (CTAGE5 antibody) at dilution of 1:2500 incubated at room temperature for 1.5 hours. This data was developed using the same antibody clone with 55279-1-PBS in a different storage buffer formulation.



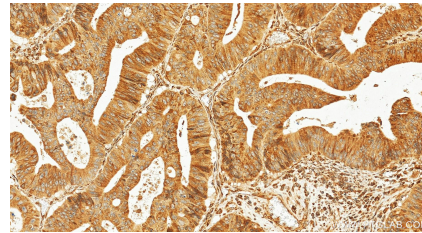
WB result of CTAGE5 antibody (55279-1-AP; 1:8000; incubated at room temperature for 1.5 hours) with sh-Control and sh-CTAGE5 transfected HepG2 cells. This data was developed using the same antibody clone with 55279-1-PBS in a different storage buffer formulation.



Immunohistochemical analysis of paraffin-embedded human prostate cancer tissue slide using 55279-1-AP (CTAGE5 antibody) at dilution of 1:100 (under 10x lens). Heat mediated antigen retrieval with Tris-EDTA buffer (pH 9.0). This data was developed using the same antibody clone with 55279-1-PBS in a different storage buffer formulation.



Immunohistochemical analysis of paraffin-embedded human prostate cancer tissue slide using 55279-1-AP (CTAGE5 antibody) at dilution of 1:100 (under 40x lens). Heat mediated antigen retrieval with Tris-EDTA buffer (pH 9.0). This data was developed using the same antibody clone with 55279-1-PBS in a different storage buffer formulation.



Immunohistochemical analysis of paraffin-embedded human colon cancer tissue slide using 55279-1-AP (CTAGE5 antibody) at dilution of 1:800 (under 20x lens). Heat mediated antigen retrieval with Tris-EDTA buffer (pH 9.0). This data was developed using the same antibody clone with 55279-1-PBS in a different storage buffer formulation.