

For Research Use Only

CTAGE5 Polyclonal antibody

Catalog Number: 55279-1-AP

Featured Product



Basic Information

Catalog Number:

55279-1-AP

Size:

350 ug/ml

Source:

Rabbit

Isotype:

IgG

GenBank Accession Number:

NM_005930

GeneID (NCBI):

4253

UNIPROT ID:

Q96PC5

Full Name:

CTAGE family, member 5

Calculated MW:

92 kDa

Observed MW:

100-110 kDa

Purification Method:

Antigen affinity purification

Recommended Dilutions:

WB 1:1000-1:5000

IHC 1:50-1:500

Applications

Tested Applications:

WB, IHC, ELISA

Species Specificity:

human

Note-IHC: suggested antigen retrieval with TE buffer pH 9.0; (*) Alternatively, antigen retrieval may be performed with citrate buffer pH 6.0

Positive Controls:

WB : HEK-293T cells, HepG2 cells, human brain tissue, PC-3 cells, human testis tissue

IHC : human prostate cancer tissue,

Background Information

Cutaneous T cell lymphoma-associated antigen 5 (CTAGE5) is a member of the cTAGE family. CTAGE5 is a tumor-associated antigen and is overexpressed in various cancer cell lines. CTAGE5 consists of a signal anchor motif, a single transmembrane domain, two coiled-coil motifs, and a proline-rich domain (PRD) from the N-terminus. CTAGE5 interacts with TANGO1 through its second coil region to form a cargo receptor complex (PMID: 21525241). This antibody is specific to CTAGE5. It can recognize all the isoforms except isoform 5B.

Storage

Storage:

Store at -20°C. Stable for one year after shipment.

Storage Buffer:

PBS with 0.02% sodium azide and 50% glycerol pH 7.3.

Aliquoting is unnecessary for -20°C storage

For technical support and original validation data for this product please contact:

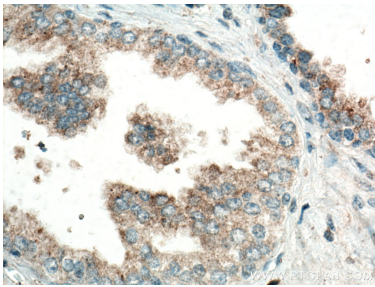
T: 4006900926

E: Proteintech-CN@ptglab.com

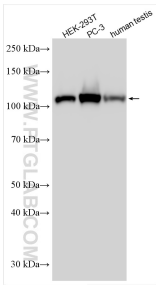
W: ptgcn.com

This product is exclusively available under Proteintech Group brand and is not available to purchase from any other manufacturer.

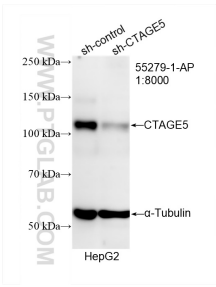
Selected Validation Data



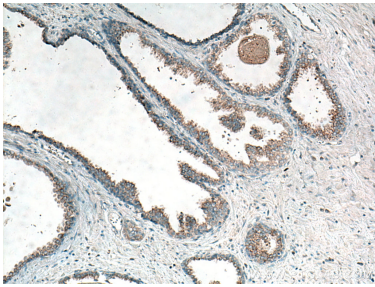
Immunohistochemical analysis of paraffin-embedded human prostate cancer tissue slide using 55279-1-AP (CTAGE5 antibody) at dilution of 1:100 (under 40x lens). Heat mediated antigen retrieval with Tris-EDTA buffer (pH 9.0).



Various lysates were subjected to SDS PAGE followed by western blot with 55279-1-AP (CTAGE5 antibody) at dilution of 1:2500 incubated at room temperature for 1.5 hours.



WB result of CTAGE5 antibody (55279-1-AP; 1:8000; incubated at room temperature for 1.5 hours) with sh-Control and sh-CTAGE5 transfected HepG2 cells.



Immunohistochemical analysis of paraffin-embedded human prostate cancer tissue slide using 55279-1-AP (CTAGE5 antibody) at dilution of 1:100 (under 10x lens). Heat mediated antigen retrieval with Tris-EDTA buffer (pH 9.0).