

For Research Use Only

GPR35 Polyclonal antibody

Catalog Number: 55248-1-AP

Featured Product

3 Publications



Basic Information

Catalog Number:

55248-1-AP

Size:

500 ug/ml

Source:

Rabbit

Isotype:

IgG

GenBank Accession Number:

NM_005301

GeneID (NCBI):

2859

UNIPROT ID:

Q9HC97

Full Name:

G protein-coupled receptor 35

Calculated MW:

34 kDa

Observed MW:

34 kDa

Purification Method:

Antigen affinity purification

Recommended Dilutions:

WB 1:500-1:2000

IHC 1:50-1:500

Applications

Tested Applications:

WB, IHC, ELISA

Cited Applications:

WB

Species Specificity:

human

Cited Species:

human

Note-IHC: suggested antigen retrieval with TE buffer pH 9.0; (*) Alternatively, antigen retrieval may be performed with citrate buffer pH 6.0

Positive Controls:

WB : A549 cells, human brain tissue, human stomach tissue

IHC : human stomach cancer tissue,

Background Information

GPR35, also named the KYNA receptor, belongs to the G-protein coupled receptor 1 family. GPR35 acts as a receptor for kynurenic acid, an intermediate in the tryptophan metabolic pathway. The activity of GPR35 is mediated by G-proteins that elicit calcium mobilization and inositol phosphate production through G(q/i/o) proteins (PMID:16754668). This antibody is specific to GPR35.

Notable Publications

Author	Pubmed ID	Journal	Application
Di Wang	33777681	Acta Pharm Sin B	WB
Wuxiyar Otkur	37054942	Eur J Pharmacol	WB
Gregory A Wyant	35926043	Science	WB

Storage

Storage:

Store at -20°C. Stable for one year after shipment.

Storage Buffer:

PBS with 0.02% sodium azide and 50% glycerol pH 7.3.

Aliquoting is unnecessary for -20°C storage

For technical support and original validation data for this product please contact:

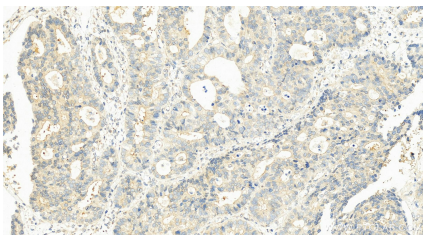
T: 4006900926

E: Proteintech-CN@ptglab.com

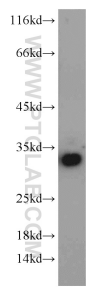
W: ptgcn.com

This product is exclusively available under Proteintech Group brand and is not available to purchase from any other manufacturer.

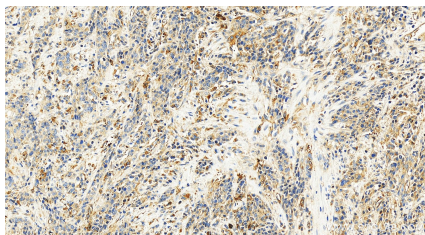
Selected Validation Data



Immunohistochemical analysis of paraffin-embedded human stomach cancer tissue slide using 55248-1-AP (GPR35 antibody) at dilution of 1:200 (under 20x lens). Heat mediated antigen retrieval with Tris-EDTA buffer (pH 9.0).



A549 cells were subjected to SDS PAGE followed by western blot with 55248-1-AP (GPR35 antibody) at dilution of 1:600 incubated at room temperature for 1.5 hours.



Immunohistochemical analysis of paraffin-embedded human stomach cancer tissue slide using 55248-1-AP (GPR35 antibody) at dilution of 1:200 (under 20x lens). Heat mediated antigen retrieval with Tris-EDTA buffer (pH 9.0).