

For Research Use Only

# MAP4K4 Polyclonal antibody, PBS Only

Catalog Number: 55247-1-PBS

Featured Product



## Basic Information

Catalog Number:

55247-1-PBS

Concentration:

1 mg/ml

Source:

Rabbit

Isotype:

IgG

GenBank Accession Number:

NM\_004834

GeneID (NCBI):

9448

UNIPROT ID:

O95819

Full Name:

mitogen-activated protein kinase  
kinase kinase kinase 4

Calculated MW:

151 kDa

Observed MW:

130-160 kDa

Purification Method:

Antigen affinity purification

## Applications

Tested Applications:

WB, IHC, IP, Indirect ELISA

Species Specificity:

human

## Background Information

MAP4K4, also named as RAB8IP1, GLK and MEKKK4, belongs to the protein kinase superfamily, STE Ser/Thr protein kinase family and STE20 subfamily. It may play a role in the response to environmental stress. MAP4K4 appears to act upstream of the JUN N-terminal pathway. This antibody is specific to MAP4K4.

## Storage

Storage:

Store at -80°C.

The product is shipped with ice packs. Upon receipt, store it immediately at -80°C

Storage Buffer:

PBS only, pH7.3

For technical support and original validation data for this product please contact:

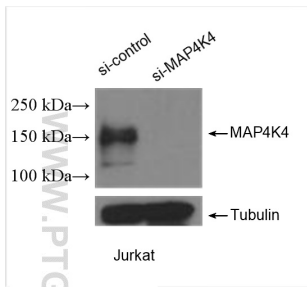
T: 4006900926

E: [Proteintech-CN@ptglab.com](mailto:Proteintech-CN@ptglab.com)

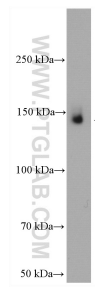
W: [ptgcn.com](http://ptgcn.com)

This product is exclusively available under Proteintech Group brand and is not available to purchase from any other manufacturer.

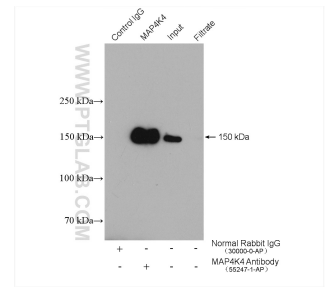
## Selected Validation Data



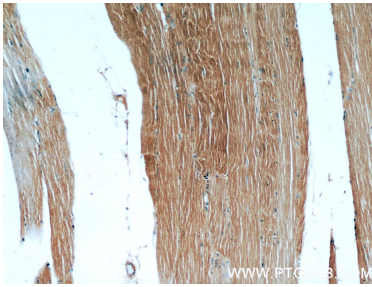
WB result of MAP4K4 antibody (55247-1-AP; 1:2000; incubated at room temperature for 1.5 hours) with sh-Control and sh-MAP4K4 transfected Jurkat cells. This data was developed using the same antibody clone with 55247-1-PBS in a different storage buffer formulation.



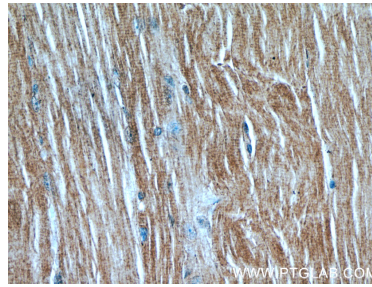
Jurkat cells were subjected to SDS PAGE followed by western blot with 55247-1-AP (MAP4K4 antibody) at dilution of 1:300 incubated at room temperature for 1.5 hours. This data was developed using the same antibody clone with 55247-1-PBS in a different storage buffer formulation.



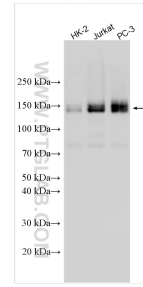
IP result of anti-MAP4K4 (IP:55247-1-AP, 4ug; Detection:55247-1-AP 1:300) with Jurkat cells lysate 4000 ug. This data was developed using the same antibody clone with 55247-1-PBS in a different storage buffer formulation.



Immunohistochemical analysis of paraffin-embedded human skeletal muscle using 55247-1-AP (MAP4K4 antibody) at dilution of 1:50 (under 10x lens). This data was developed using the same antibody clone with 55247-1-PBS in a different storage buffer formulation.



Immunohistochemical analysis of paraffin-embedded human skeletal muscle using 55247-1-AP (MAP4K4 antibody) at dilution of 1:50 (under 40x lens). This data was developed using the same antibody clone with 55247-1-PBS in a different storage buffer formulation.



Various lysates were subjected to SDS PAGE followed by western blot with 55247-1-AP (MAP4K4 antibody) at dilution of 1:2000 incubated at room temperature for 1.5 hours. This data was developed using the same antibody clone with 55247-1-PBS in a different storage buffer formulation.