

For Research Use Only

# CSH1 Polyclonal antibody

Catalog Number: 55236-1-AP



## Basic Information

Catalog Number:

55236-1-AP

Size:

800 ug/ml

Source:

Rabbit

Isotype:

IgG

GenBank Accession Number:

NM\_001317

GeneID (NCBI):

1442

UNIPROT ID:

PODML3

Full Name:

chorionic somatomammotropin hormone 1 (placental lactogen)

Calculated MW:

25 kDa

Observed MW:

23-25 kDa

Purification Method:

Antigen affinity purification

Recommended Dilutions:

WB 1:500-1:1000

IHC 1:20-1:200

## Applications

Tested Applications:

WB, IHC, ELISA

Species Specificity:

human

Positive Controls:

WB : human placenta tissue,

IHC : human placenta tissue,

**Note-IHC: suggested antigen retrieval with TE buffer pH 9.0; (\*) Alternatively, antigen retrieval may be performed with citrate buffer pH 6.0**

## Background Information

CSH1, also named as PL, CSH2 and Lactogen, belongs to the somatotropin/prolactin family. CSH1 produced only during pregnancy and is involved in stimulating lactation, fetal growth and metabolism. It does not interact with GHR but only activates PRLR through zinc-induced dimerization(PubMed: 2744760). This antibody is specific to CSH1.

## Storage

Storage:

Store at -20°C. Stable for one year after shipment.

Storage Buffer:

PBS with 0.02% sodium azide and 50% glycerol pH 7.3.

Aliquoting is unnecessary for -20°C storage

For technical support and original validation data for this product please contact:

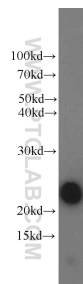
T: 4006900926

E: [Proteintech-CN@ptglab.com](mailto:Proteintech-CN@ptglab.com)

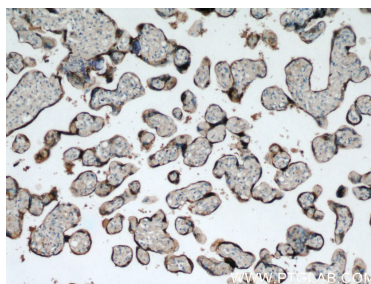
W: [ptgcn.com](http://ptgcn.com)

**This product is exclusively available under Proteintech Group brand and is not available to purchase from any other manufacturer.**

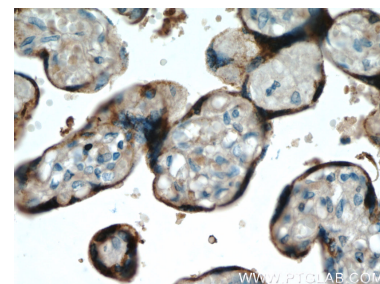
## Selected Validation Data



human placenta tissue were subjected to SDS PAGE followed by western blot with 55236-1-AP (Placental lactogen antibody) at dilution of 1:800 incubated at room temperature for 1.5 hours.



Immunohistochemical analysis of paraffin-embedded human placenta using 55236-1-AP (Placental lactogen antibody) at dilution of 1:50 (under 10x lens).



Immunohistochemical analysis of paraffin-embedded human placenta using 55236-1-AP (Placental lactogen antibody) at dilution of 1:50 (under 40x lens).