

For Research Use Only

MBD2 Polyclonal antibody

Catalog Number: 55200-1-AP

Featured Product

7 Publications



Basic Information

Catalog Number:

55200-1-AP

Size:

400 µg/ml

Source:

Rabbit

Isotype:

IgG

GenBank Accession Number:

NM_003927

GeneID (NCBI):

8932

UNIPROT ID:

Q9UBB5

Full Name:

methyl-CpG binding domain protein 2

Calculated MW:

43 kDa

Observed MW:

43-45 kDa

Purification Method:

Antigen affinity purification

Recommended Dilutions:

WB 1:500-1:1000

IHC 1:50-1:500

Applications

Tested Applications:

WB, IHC, ELISA

Cited Applications:

WB, IF

Species Specificity:

human

Cited Species:

human, mouse

Note-IHC: suggested antigen retrieval with TE buffer pH 9.0; (*) Alternatively, antigen retrieval may be performed with citrate buffer pH 6.0

Positive Controls:

WB : Jurkat cells, human brain tissue, A431 cells, HEK-293 cells

IHC : human cervical cancer tissue,

Background Information

MBD2, also named as DMTase, binds CpG islands in promoters where the DNA is methylated at position 5 of cytosine within CpG dinucleotides. MBD2 binds hemi-methylated DNA as well. It recruits histone deacetylases and DNA methyltransferases. MBD2 acts as transcriptional repressor and plays a role in gene silencing. (PMID:9774669) This antibody is specific to MBD2. It recognize isoform1 and isoform2 of MBD2.

Notable Publications

Author	Pubmed ID	Journal	Application
Ling Cheng	33271126	Exp Cell Res	WB
Jianguo Yang	33691114	Cell Rep	WB
Xiao-Hui Wang	34103526	Nat Commun	WB

Storage

Storage:

Store at -20°C. Stable for one year after shipment.

Storage Buffer:

PBS with 0.02% sodium azide and 50% glycerol pH 7.3.

Aliquoting is unnecessary for -20°C storage

For technical support and original validation data for this product please contact:

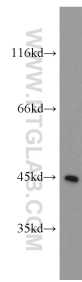
T: 4006900926

E: Proteintech-CN@ptglab.com

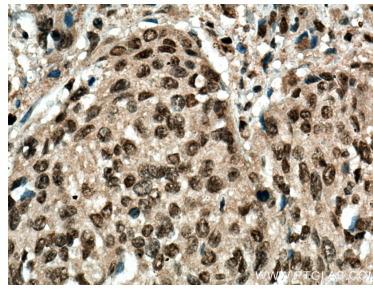
W: ptgcn.com

This product is exclusively available under Proteintech Group brand and is not available to purchase from any other manufacturer.

Selected Validation Data



Jurkat cells were subjected to SDS PAGE followed by western blot with 55200-1-AP (MBD2 antibody) at dilution of 1:1000 incubated at room temperature for 1.5 hours.



Immunohistochemical analysis of paraffin-embedded human cervical cancer tissue slide using 55200-1-AP (MBD2 antibody) at dilution of 1:200 (under 40x lens). Heat mediated antigen retrieval with Tris-EDTA buffer (pH 9.0).