

EWS Polyclonal antibody

Catalog Number: 55191-1-AP

5 Publications

Basic Information

Catalog Number:

55191-1-AP

Size:

750 µg/ml

Source:

Rabbit

Isotype:

IgG

GenBank Accession Number:

NM_005243

GeneID (NCBI):

2130

UNIPROT ID:

Q01844

Full Name:

Ewing sarcoma breakpoint region 1

Calculated MW:

68 kDa

Observed MW:

68-70 kDa

Purification Method:

Antigen affinity purification

Recommended Dilutions:

WB 1:1000-1:6000

IHC 1:50-1:500

Applications

Tested Applications:

IHC, WB, ELISA

Cited Applications:

WB, IF

Species Specificity:

human, mouse, rat

Cited Species:

human, rat, mouse

Note-IHC: suggested antigen retrieval with TE buffer pH 9.0; (*) Alternatively, antigen retrieval may be performed with citrate buffer pH 6.0

Positive Controls:

WB : K-562 cells, mouse testis tissue, Jurkat cells

IHC : human colon cancer tissue, human small intestine tissue

Background Information

EWS, also named as WSR1, belongs to the RRM TET family. It might normally function as a repressor. EWS-fusion-proteins (EFPS) may play a role in the tumorigenic process. They may disturb gene expression by mimicking, or interfering with the normal function of CTD-POLII within the transcription initiation complex. They may also contribute to an aberrant activation of the fusion protein target genes. This antibody is specific to EWS. And a 90 kDa band also could be detected (PMID:23552423).

Notable Publications

Author	Pubmed ID	Journal	Application
Zhijie Shen	33294289	Mol Ther Nucleic Acids	WB
Xinxin Zuo	33398173	Nat Struct Mol Biol	WB
Junichiro Mitsui	38311402	J Reprod Dev	IF

Storage

Storage:

Store at -20°C. Stable for one year after shipment.

Storage Buffer:

PBS with 0.02% sodium azide and 50% glycerol pH 7.3.

Aliquoting is unnecessary for -20°C storage

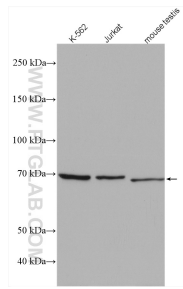
For technical support and original validation data for this product please contact:

T: 4006900926

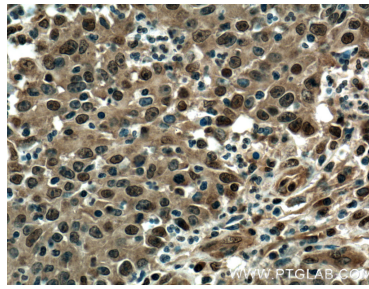
E: Proteintech-CN@ptglab.comW: ptgcn.com

This product is exclusively available under Proteintech Group brand and is not available to purchase from any other manufacturer.

Selected Validation Data



Various lysates were subjected to SDS PAGE followed by western blot with 55191-1-AP (EWS antibody) at dilution of 1:3000 incubated at room temperature for 1.5 hours.



Immunohistochemical analysis of paraffin-embedded human colon cancer tissue slide using 55191-1-AP (EWS Antibody) at dilution of 1:200 (under 40x lens). Heat mediated antigen retrieval with Tris-EDTA buffer (pH 9.0).