

For Research Use Only

PDE6C Polyclonal antibody

Catalog Number: 55183-1-AP



Basic Information

Catalog Number:

55183-1-AP

Concentration:

200 ug/ml

Source:

Rabbit

Isotype:

IgG

GenBank Accession Number:

NM_006204

GeneID (NCBI):

5146

UNIPROT ID:

P51160

Full Name:

phosphodiesterase 6C, cGMP-specific,
cone, alpha prime

Calculated MW:

99 kDa

Observed MW:

52 kDa, 99 kDa

Purification Method:

Antigen affinity purification

Recommended Dilutions:

WB: 1:200-1:1000

Applications

Tested Applications:

WB, ELISA

Species Specificity:

human

Positive Controls:

WB : Y79 cells,

Background Information

PDE6C, also named as PDEA2, belongs to the cyclic nucleotide phosphodiesterase family. It catalyze the reaction: Guanosine 3',5'-cyclic phosphate + H₂O = guanosine 5'-phosphate. Defects in PDE6C are the cause of cone dystrophy type 4 (COD4). Mutations in the PDE6C gene encoding the catalytic subunit of the cone photoreceptor phosphodiesterase as a cause of autosomal recessive achromatopsia.(PMID:19887631) This antibody is specific to PDE6C.

Storage

Storage:

Store at -20°C. Stable for one year after shipment.

Storage Buffer:

PBS with 0.02% sodium azide and 50% glycerol, pH7.3

Aliquoting is unnecessary for -20°C storage

For technical support and original validation data for this product please contact:

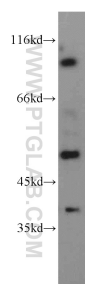
T: 4006900926

E: Proteintech-CN@ptglab.com

W: ptgcn.com

This product is exclusively available under Proteintech Group brand and is not available to purchase from any other manufacturer.

Selected Validation Data



Y79 cells were subjected to SDS PAGE followed by western blot with 55183-1-AP (PDE6C antibody) at dilution of 1:200 incubated at room temperature for 1.5 hours.