

For Research Use Only

# PPP3CC-specific Polyclonal antibody

Catalog Number: 55163-1-AP

2 Publications



## Basic Information

Catalog Number:

55163-1-AP

Size:

600 ug/ml

Source:

Rabbit

Isotype:

IgG

GenBank Accession Number:

NM\_005605

GeneID (NCBI):

5533

UNIPROT ID:

P48454

Full Name:

protein phosphatase 3 (formerly 2B), catalytic subunit, gamma isoform

Calculated MW:

58 kDa

Observed MW:

58 kDa

Purification Method:

Antigen affinity purification

Recommended Dilutions:

WB 1:500-1:2000

IHC 1:50-1:500

IF/ICC 1:50-1:500

## Applications

Tested Applications:

WB, IHC, IF/ICC, ELISA

Cited Applications:

WB, IHC

Species Specificity:

human, mouse

Cited Species:

human, rat

**Note-IHC: suggested antigen retrieval with TE buffer pH 9.0; (\*) Alternatively, antigen retrieval may be performed with citrate buffer pH 6.0**

Positive Controls:

WB : fetal human brain tissue, human brain tissue, human testis tissue

IHC : human stomach tissue,

IF/ICC : U2OS cells,

## Background Information

PPP3CC, also named as CALNA3 and CNA3, belongs to the PPP phosphatase family and PP-2B subfamily. It is a calcium-dependent, calmodulin-stimulated protein phosphatase. It may have a role in the calmodulin activation of calcineurin. This antibody is specific to PPP3CC.

## Notable Publications

Author	Pubmed ID	Journal	Application
Hong Cao	35235867	Acta Biomater	WB
Yan Fang	39127651	BMC Pregnancy Childbirth	IHC

## Storage

Storage:

Store at -20°C. Stable for one year after shipment.

Storage Buffer:

PBS with 0.02% sodium azide and 50% glycerol pH 7.3.

Aliquoting is unnecessary for -20°C storage

For technical support and original validation data for this product please contact:

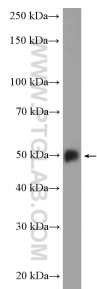
T: 4006900926

E: [Proteintech-CN@ptglab.com](mailto:Proteintech-CN@ptglab.com)

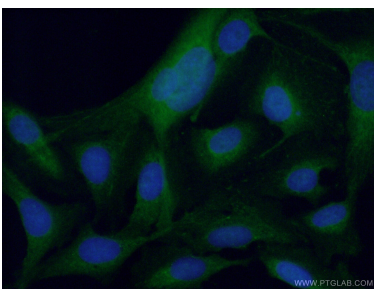
W: [ptgcn.com](http://ptgcn.com)

This product is exclusively available under Proteintech Group brand and is not available to purchase from any other manufacturer.

Selected Validation Data



fetal human brain tissue were subjected to SDS PAGE followed by western blot with 55163-1-AP (PPP3CC-specific antibody at dilution of 1:1000 incubated at room temperature for 1.5 hours.



Immunofluorescent analysis of (4% PFA) fixed U2OS cells using 55163-1-AP (PPP3CC-specific antibody) at dilution of 1:50 and Alexa Fluor 488-conjugated AffiniPure Goat Anti-Rabbit IgG(H+L).

Immunohistochemical analysis of paraffin-embedded human stomach tissue slide using 55163-1-AP (PPP3CC-specific antibody) at dilution of 1:200 (under 20x lens). Heat mediated antigen retrieval with Tris-EDTA buffer (pH 9.0).