

For Research Use Only

# XDH Polyclonal antibody

Catalog Number: 55156-1-AP

Featured Product

17 Publications



## Basic Information

**Catalog Number:**

55156-1-AP

**Size:**

387 µg/ml

**Source:**

Rabbit

**Isotype:**

IgG

**GenBank Accession Number:**

NM\_000379

**GeneID (NCBI):**

7498

**UNIPROT ID:**

P47989

**Full Name:**

xanthine dehydrogenase

**Calculated MW:**

146 kDa

**Observed MW:**

147-150 kDa

**Purification Method:**

Antigen affinity purification

**Recommended Dilutions:**

WB 1:500-1:2000

IHC 1:50-1:500

## Applications

**Tested Applications:**

IHC, WB, ELISA

**Cited Applications:**

WB

**Species Specificity:**

human, mouse, rat

**Cited Species:**

human, rat, mouse, bovine

**Note-IHC: suggested antigen retrieval with TE buffer pH 9.0; (\*) Alternatively, antigen retrieval may be performed with citrate buffer pH 6.0**

**Positive Controls:**

WB : mouse liver tissue, rat liver tissue

IHC : human heart tissue,

## Background Information

XDH, also named as XDHA, XO and XD, belongs to the xanthine dehydrogenase family. It catalyzes the last two steps of purine catabolism in man, formation of the end product uric acid from hypoxanthine and xanthine. The mammalian enzyme is synthesized as a dehydrogenase (XDH), which uses NAD as the electron acceptor, but it can be converted into an oxidase (XO) both in vivo and in vitro. This gene encodes a protein of 150 kDa and the 150 kDa polypeptide can be processed into a fragment of 130 kDa and further to 85 kDa by spontaneous proteolytic cleavage (PMID:9989587). In addition, the full length polypeptide can be also partially processed into a 87 kDa and 59 kDa fragments (PMID:21528298). It also can exist as a homodimer (PMID:9989587). This antibody is specific to XDH.

## Notable Publications

Author	Pubmed ID	Journal	Application
Qi Xue Huang	36175227	J Dairy Sci	WB
Yiming Wang	33080936	Int J Mol Sci	WB
Lihua Zhang	36374311	Food Funct	WB

## Storage

**Storage:**

Store at -20°C. Stable for one year after shipment.

**Storage Buffer:**

PBS with 0.02% sodium azide and 50% glycerol pH 7.3.

Aliquoting is unnecessary for -20°C storage

For technical support and original validation data for this product please contact:

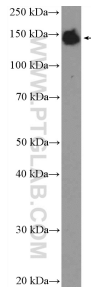
T: 4006900926

E: Proteintech-CN@ptglab.com

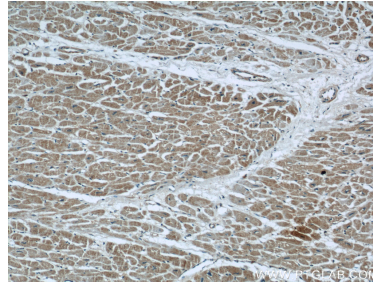
W: ptgcn.com

**This product is exclusively available under Proteintech Group brand and is not available to purchase from any other manufacturer.**

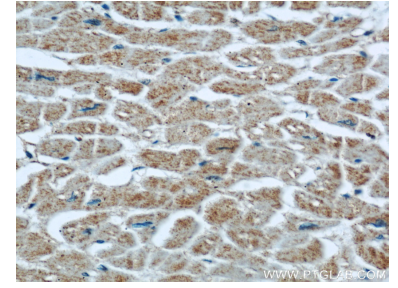
## Selected Validation Data



mouse liver tissue were subjected to SDS PAGE followed by western blot with 55156-1-AP (XDH Antibody) at dilution of 1:1000 incubated at room temperature for 1.5 hours.



Immunohistochemical analysis of paraffin-embedded human heart using 55156-1-AP (XDH antibody) at dilution of 1:100 (under 10x lens).



Immunohistochemical analysis of paraffin-embedded human heart using 55156-1-AP (XDH antibody) at dilution of 1:100 (under 40x lens).