

LNPEP Polyclonal antibody

Catalog Number: 55154-1-AP

Basic Information

Catalog Number:

55154-1-AP

Size:

1000 µg/ml

Source:

Rabbit

Isotype:

IgG

GenBank Accession Number:

NM_005575

GeneID (NCBI):

4012

UNIPROT ID:

Q9UIQ6

Full Name:

leucyl/cystinyl aminopeptidase

Calculated MW:

117 kDa

Observed MW:

117-125 kDa

Purification Method:

Antigen affinity purification

Recommended Dilutions:

WB 1:500-1:1000

IHC 1:20-1:200

Applications

Tested Applications:

IHC, WB, ELISA

Species Specificity:

human

Note-IHC: suggested antigen retrieval with TE buffer pH 9.0; (*) Alternatively, antigen retrieval may be performed with citrate buffer pH 6.0

Positive Controls:

WB : human brain tissue, COLO 320 cells, human heart tissue

IHC : human heart tissue, human kidney tissue

Background Information

LNPEP, also named as OTASE, IRAP, P-LAP and Otase, may be involved in the inactivation of neuronal peptides in the brain. LNPEP cleaves Met-enkephalin and dynorphin. It binds angiotensin IV and may be the angiotensin IV receptor in the brain. It can be detected a protein with molecular mass of 165 kDa in several human tissues including heart, small intestine, kidney and 140 kDa in brain. LNPEP contains 18 potential N-glycosylation sites so that the differential usage of the glycosylation site in the brain causes the difference in the molecular mass of the enzyme.(PMID:11389728). Two forms of LNPEP are purified from human placenta: one is a monomeric, 61-kDa protein and the other is a heterodimeric protein with 64- and 97-kDa subunits(PMID:10601849). It can form a homodimer of 280 kDa(PMID:10601849). This antibody is specific to LNPEP.

Storage

Storage:

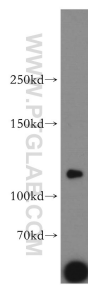
Store at -20°C.

Storage Buffer:

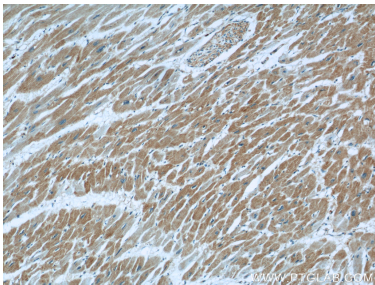
PBS with 0.02% sodium azide and 50% glycerol pH 7.3.

Aliquoting is unnecessary for -20°C storage

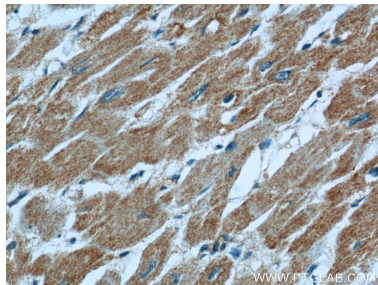
Selected Validation Data



human brain tissue were subjected to SDS PAGE followed by western blot with 55154-1-AP (LNPEP antibody) at dilution of 1:800 incubated at room temperature for 1.5 hours.



Immunohistochemical analysis of paraffin-embedded human heart using 55154-1-AP (LNPEP antibody) at dilution of 1:50 (under 10x lens).



Immunohistochemical analysis of paraffin-embedded human heart using 55154-1-AP (LNPEP antibody) at dilution of 1:50 (under 40x lens).