

For Research Use Only

CaMKII gamma-Specific Polyclonal antibody



Catalog Number: 55140-1-AP

2 Publications

Basic Information

Catalog Number:

55140-1-AP

Size:

600 μ g/ml

Source:

Rabbit

Isotype:

IgG

GenBank Accession Number:

NM_001222

GeneID (NCBI):

818

UNIPROT ID:

Q13555

Full Name:

calcium/calmodulin-dependent protein kinase II gamma

Calculated MW:

65 kDa

Observed MW:

45-65 kDa

Purification Method:

Antigen affinity purification

Recommended Dilutions:

WB 1:500-1:3000

IHC 1:20-1:200

Applications

Tested Applications:

IHC, WB, ELISA

Cited Applications:

WB

Species Specificity:

human, mouse, rat

Cited Species:

human

Positive Controls:

WB: mouse brain tissue,

IHC: human skeletal muscle tissue,

Note-IHC: suggested antigen retrieval with TE buffer pH 9.0; (*) Alternatively, antigen retrieval may be performed with citrate buffer pH 6.0

Background Information

CaMKII gamma, also named as CAMKG, belongs to the protein kinase superfamily, CAMK Ser/Thr protein kinase family and CaMK subfamily. It is a prominent kinase in the central nervous system that may function in long-term potentiation and neurotransmitter release. CaMK2 is a Ca²⁺-signaling intermediate that contains α , β , γ and δ subunits. The antibody is specific to CAMK2G.

Notable Publications

| Author | Pubmed ID | Journal | Application |
|-------------|-----------|---------------------|-------------|
| Ya Peng | 33761465 | Aging (Albany NY) | WB |
| Qingfeng Yu | 31247466 | Biomed Pharmacother | WB |

Storage

Storage:

Store at -20°C.

Storage Buffer:

PBS with 0.02% sodium azide and 50% glycerol pH 7.3.

Aliquoting is unnecessary for -20°C storage

For technical support and original validation data for this product please contact:

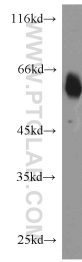
T: 4006900926

E: Proteintech-CN@ptglab.com

W: ptgcn.com

This product is exclusively available under Proteintech Group brand and is not available to purchase from any other manufacturer.

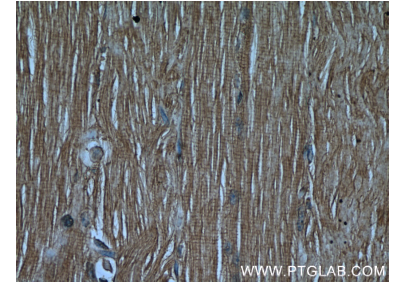
Selected Validation Data



mouse brain tissue were subjected to SDS PAGE followed by western blot with 55140-1-AP (CaMKII gamma-Specific antibody) at dilution of 1:1000 incubated at room temperature for 1.5 hours.



Immunohistochemical analysis of paraffin-embedded human skeletal muscle using 55140-1-AP (CaMKII gamma-Specific antibody) at dilution of 1:50 (under 10x lens).



Immunohistochemical analysis of paraffin-embedded human skeletal muscle using 55140-1-AP (CaMKII gamma-Specific antibody) at dilution of 1:50 (under 40x lens).