

For Research Use Only

PPP1CB-Specific Polyclonal antibody

Catalog Number: 55136-1-AP

Featured Product

3 Publications



Basic Information

Catalog Number:

55136-1-AP

Concentration:

1600 ug/ml

Source:

Rabbit

Isotype:

IgG

GenBank Accession Number:

NM_002709

GeneID (NCBI):

5500

UNIPROT ID:

P62140

Full Name:

protein phosphatase 1, catalytic subunit, beta isoform

Calculated MW:

37 kDa

Observed MW:

33-40 kDa

Purification Method:

Antigen affinity purification

Recommended Dilutions:

WB: 1:1000-1:8000

IHC: 1:400-1:1600

IF/ICC: 1:50-1:500

Applications

Tested Applications:

WB, IHC, IF/ICC, ELISA

Cited Applications:

WB

Species Specificity:

human, mouse, rat

Cited Species:

human, mouse

Note-IHC: suggested antigen retrieval with TE buffer pH 9.0; (*) Alternatively, antigen retrieval may be performed with citrate buffer pH 6.0

Positive Controls:

WB : A549 cells, BxPC-3 cells, NIH/3T3 cells, SH-SY5Y cells, mouse brain tissue

IHC : human skin cancer tissue,

IF/ICC : A549 cells,

Background Information

PPP1CB, also named as PP-1B, belongs to the PPP phosphatase family and PP-1 subfamily. Protein phosphatase (PP1) is essential for cell division, it participates in the regulation of glycogen metabolism, muscle contractility and protein synthesis. PPP1CB is involved in regulation of ionic conductances and long-term synaptic plasticity. This antibody is specific to PPP1CB.

Notable Publications

| Author | Pubmed ID | Journal | Application |
|-------------|-----------|-------------|-------------|
| Zhanying Hu | 32702076 | PLoS Pathog | WB |
| Yang Guo | 34280391 | Exp Eye Res | WB |
| Di Fan | 40132669 | J Adv Res | WB |

Storage

Storage:

Store at -20°C. Stable for one year after shipment.

Storage Buffer:

PBS with 0.02% sodium azide and 50% glycerol, pH7.3

Aliquoting is unnecessary for -20°C storage

For technical support and original validation data for this product please contact:

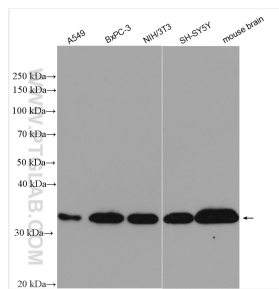
T: 4006900926

E: Proteintech-CN@ptglab.com

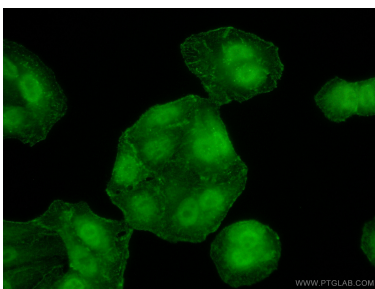
W: ptgcn.com

This product is exclusively available under Proteintech Group brand and is not available to purchase from any other manufacturer.

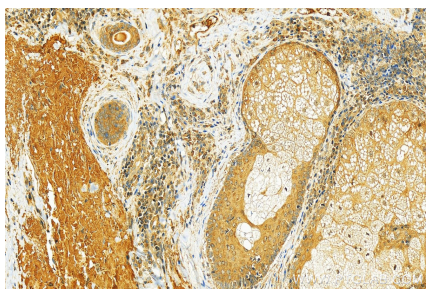
Selected Validation Data



Various lysates were subjected to SDS PAGE followed by western blot with 55136-1-AP (PPP1CB-Specific antibody) at dilution of 1:4000 incubated at room temperature for 1.5 hours.



Immunofluorescent analysis of (10% Formaldehyde) fixed A549 cells using 55136-1-AP (PPP1CB-Specific antibody) at dilution of 1:50 and Alexa Fluor 488-conjugated AffiniPure Goat Anti-Rabbit IgG(H+L).



Immunohistochemical analysis of paraffin-embedded skin cancer slide using 55136-1-AP (PPP1CB-Specific antibody) at dilution of 1:800 (under 20x lens). Heat mediated antigen retrieval with Tris-EDTA buffer (pH 9.0).