

For Research Use Only

GUCY2D Polyclonal antibody, PBS Only

Catalog Number:55127-1-PBS



Basic Information

Catalog Number:

55127-1-PBS

Source:

Rabbit

Isotype:

IgG

GenBank Accession Number:

NM_000180

GeneID (NCBI):

3000

UNIPROT ID:

Q02846

Full Name:

guanylate cyclase 2D, membrane
(retina-specific)

Calculated MW:

120 kDa

Observed MW:

120 kDa, 95 kDa

Purification Method:

Antigen affinity purification

Applications

Tested Applications:

WB, Indirect ELISA

Species Specificity:

human, mouse, rat

Background Information

GUCY2D, also named as CORD6, GUC1A4, GUC2D, RETGC, RETGC1 and ROS-GC, belongs to the adenylyl cyclase class-4/guanylyl cyclase family. It probably plays a specific functional role in the rods and/or cones of photoreceptors. It may be the enzyme involved in the resynthesis of cGMP required for recovery of the dark state after phototransduction. A number of nonsense and frameshift mutations in the GUCY2D gene have been identified in LCA1 patients. Defects in GUCY2D are the cause of cone-rod dystrophy type 6 (CORD6). GUCY2D is responsible for many reported cases of autosomal dominant CRDs. The antibody is specific to GUCY2D.

Storage

Storage:

Store at -80°C.

The product is shipped with ice packs. Upon receipt, store it immediately at -80°C

Storage Buffer:

PBS only, pH7.3

For technical support and original validation data for this product please contact:

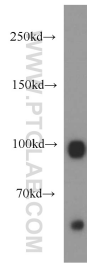
T: 4006900926

E: Proteintech-CN@ptglab.com

W: ptgcn.com

This product is exclusively available under Proteintech Group brand and is not available to purchase from any other manufacturer.

Selected Validation Data



mouse brain tissue were subjected to SDS PAGE followed by western blot with 55127-1-AP (GUCY2D antibody) at dilution of 1:300 incubated at room temperature for 1.5 hours. This data was developed using the same antibody clone with 55127-1-PBS in a different storage buffer formulation.