

# INSRR Polyclonal antibody

Catalog Number: 55112-1-AP

## Basic Information

**Catalog Number:**

55112-1-AP

**Size:**

400 µg/ml

**Source:**

Rabbit

**Isotype:**

IgG

**GenBank Accession Number:**

NM\_014215

**GeneID (NCBI):**

3645

**UNIPROT ID:**

P14616

**Full Name:**

IR related receptor

**Calculated MW:**

144 kDa

**Observed MW:**

150-155 kDa

**Purification Method:**

Antigen affinity purification

**Recommended Dilutions:**

WB 1:500-1:2000

## Applications

**Tested Applications:**

WB, ELISA

**Species Specificity:**

human, mouse, rat

**Positive Controls:**

WB : mouse kidney tissue, human brain tissue

## Background Information

INSRR, also named as IRR, belongs to the protein kinase superfamily, Tyr protein kinase family and INS receptor subfamily. It probably binds an INS related protein and has a tyrosine-protein kinase activity. It phosphorylates the INS receptor substrates IRS-1 and IRS-2. INSRR is a heterotetrameric transmembrane receptor composed of two alpha and two beta chains linked by disulfide bonds. INSRR shares high homology with the INS (IR) and the IGF-1R, but doesn't bind any of IR and IGF-1R known ligands. The antibody is specific to INSRR.

## Storage

**Storage:**

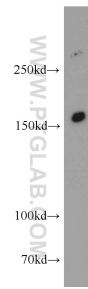
Store at -20°C.

**Storage Buffer:**

PBS with 0.02% sodium azide and 50% glycerol pH 7.3.

Aliquoting is unnecessary for -20°C storage

## Selected Validation Data



mouse kidney tissue were subjected to SDS PAGE followed by western blot with 55112-1-AP (INSRR antibody) at dilution of 1:500 incubated at room temperature for 1.5 hours.