

ATP13A3 Polyclonal antibody

Catalog Number: 55108-1-AP

Basic Information

Catalog Number:

55108-1-AP

Size:

1600 µg/ml

Source:

Rabbit

Isotype:

IgG

GenBank Accession Number:

NM_024524

GeneID (NCBI):

79572

UNIPROT ID:

Q9H7F0

Full Name:

ATPase type 13A3

Calculated MW:

138 kDa

Observed MW:

78 kDa

Purification Method:

Antigen affinity purification

Recommended Dilutions:

WB 1:500-1:2000

Applications

Tested Applications:

WB, ELISA

Species Specificity:

human

Positive Controls:

WB : BxPC-3 cells, MCF-7 cells

Background Information

ATP13A3 is a member of the P-type ATPase family of proteins that transport a variety of cations across membranes. ATP13A3 is a novel member of the enigmatic mammalian PTS that contributes to cellular polyamine uptake and is implicated in disease (PMID: 33310703). Mutations in ATP13A3 cause Primary Pulmonary Hypertension 5 (PMID: 30679663, 34493544). ATP13A3 can be detected as 78 kDa representing a truncated isoform of ATP13A3 as reported (PMID: 35260637).

Storage

Storage:

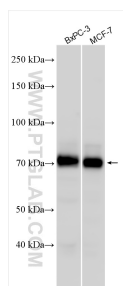
Store at -20°C. Stable for one year after shipment.

Storage Buffer:

0.1M NaHCO₃, 0.1M glycine, 0.02% sodium azide and 50% glycerol pH 7.3.

Aliquoting is unnecessary for -20°C storage

Selected Validation Data



Various lysates were subjected to SDS PAGE followed by western blot with 55108-1-AP (ATP13A3 antibody) at dilution of 1:1000 incubated at room temperature for 1.5 hours.