

For Research Use Only

# CDK3 Polyclonal antibody, PBS Only

Catalog Number: 55103-1-PBS



## Basic Information

Catalog Number:

55103-1-PBS

Size:

1 mg/ml

Source:

Rabbit

Isotype:

IgG

GenBank Accession Number:

NM\_001258

GeneID (NCBI):

1018

UNIPROT ID:

Q00526

Full Name:

cyclin-dependent kinase 3

Calculated MW:

35 kDa

Observed MW:

40-45 kDa

Purification Method:

Antigen affinity purification

## Applications

Tested Applications:

WB, IHC, IF/ICC, FC (Intra), Indirect ELISA

Species Specificity:

human, mouse, rat

## Background Information

CDK3 belongs to the protein kinase superfamily, CMGC Ser/Thr protein kinase family and CDC2/CDKX subfamily. It is probably involved in the control of the cell cycle. CDK3 interacts with a yet unknown type of cyclin. It can phosphorylate histone H1. Endogenous Cyclin C/Cdk3 complexes are critical to promote exit from quiescence in an Rb-dependent manner. Cyclin C/Cdk3 complexes is a key regulators of cell cycle reentry in human cells. (PMID: 15130482) The antibody is specific to CDK3.

## Storage

Storage:

Store at -80°C.

The product is shipped with ice packs. Upon receipt, store it immediately at -80°C

Storage Buffer:

PBS Only

For technical support and original validation data for this product please contact:

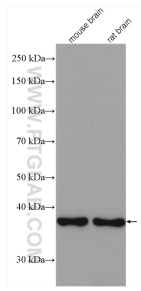
T: 4006900926

E: [Proteintech-CN@ptglab.com](mailto:Proteintech-CN@ptglab.com)

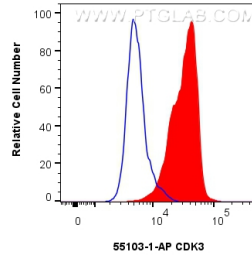
W: [ptgcn.com](http://ptgcn.com)

This product is exclusively available under Proteintech Group brand and is not available to purchase from any other manufacturer.

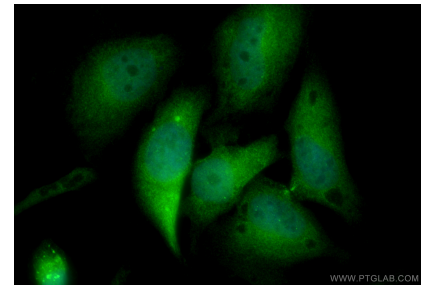
## Selected Validation Data



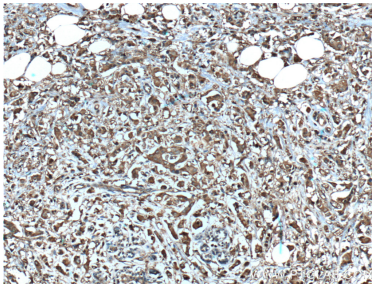
Various lysates were subjected to SDS PAGE followed by western blot with 55103-1-AP (CDK3 antibody) at dilution of 1:2000 incubated at room temperature for 1.5 hours. This data was developed using the same antibody clone with 55103-1-PBS in a different storage buffer formulation.



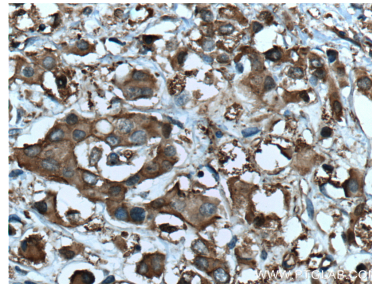
1x10<sup>6</sup> HeLa cells were intracellularly stained with 0.25 ug CDK3 Polyclonal antibody (55103-1-AP) and CoraLite®488-Conjugated Goat Anti-Rabbit IgG(H+L) (SA00013-2)(red), or 0.25 ug Rabbit IgG control Rabbit PolyAb (30000-0-AP) (blue). Cells were fixed and permeabilized with Transcription Factor Staining Buffer Kit (PF00011). This data was developed using the same antibody clone with 55103-1-PBS in a different storage buffer formulation.



Immunofluorescent analysis of (4% PFA) fixed HeLa cells using CDK3 antibody (55103-1-AP) at dilution of 1:400 and CoraLite®488-Conjugated Goat Anti-Rabbit IgG(H+L) (SA00013-2). This data was developed using the same antibody clone with 55103-1-PBS in a different storage buffer formulation.



Immunohistochemical analysis of paraffin-embedded human breast cancer tissue slide using 55103-1-AP (CDK3 Antibody) at dilution of 1:200 (under 10x lens). Heat mediated antigen retrieval with Tris-EDTA buffer (pH 9.0). This data was developed using the same antibody clone with 55103-1-PBS in a different storage buffer formulation.



Immunohistochemical analysis of paraffin-embedded human breast cancer tissue slide using 55103-1-AP (CDK3 Antibody) at dilution of 1:200 (under 40x lens). Heat mediated antigen retrieval with Tris-EDTA buffer (pH 9.0). This data was developed using the same antibody clone with 55103-1-PBS in a different storage buffer formulation.