

For Research Use Only

PTCH2 Polyclonal antibody

Catalog Number: 55091-1-AP **3 Publications**



Basic Information

Catalog Number: 55091-1-AP	GenBank Accession Number: NM_003738	Purification Method: Antigen affinity purification
Size: 300 µg/ml	GeneID (NCBI): 8643	Recommended Dilutions: WB 1:500-1:1000
Source: Rabbit	UNIPROT ID: Q9Y6C5	
Isotype: IgG	Full Name: patched homolog 2 (Drosophila)	
	Calculated MW: 131 kDa	
	Observed MW: 131-140 kDa	

Applications

Tested Applications: WB, ELISA	Positive Controls: WB : HepG2 cells, human brain tissue
Cited Applications: WB	
Species Specificity: human, mouse, rat	
Cited Species: human, rat, mouse	

Background Information

PTCH1 (patched homolog 1) and PTCH2 are twelve-pass transmembrane proteins that act receptors of Hedgehog signaling pathway (PMID: 8906794; 9811851). Signals of Hedgehog family proteins (SHH, IHH and DHH in humans) are transduced through Patched family receptors (PTCH1 and PTCH2) and Smoothened (SMO) to Gli family transcription factors. Hedgehog pathway plays a critical role in embryonic development and tissue homeostasis, and its dysregulation has been implicated in many human diseases including congenital disorder and cancer (PMID: 23719536; 23532857). PTCH2 may function as a tumor suppressor in the Hedgehog signaling pathway. Alterations in PTCH2 gene have been associated with nevoid basal cell carcinoma syndrome, basal cell carcinoma, medulloblastoma, and susceptibility to congenital macrostomia. This antibody is specific to PTCH2.

Notable Publications

Author	Pubmed ID	Journal	Application
Xin Chen	35028532	iScience	WB
Ya-Dong Zhang	29244790	Exp Mol Med	WB
Qiuyao Wu	37142671	Cell Res	WB

Storage

Storage:
Store at -20°C. Stable for one year after shipment.
Storage Buffer:
PBS with 0.02% sodium azide and 50% glycerol pH 7.3.
Aliquoting is unnecessary for -20°C storage

For technical support and original validation data for this product please contact:

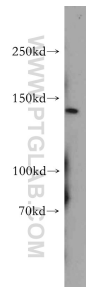
T: 4006900926

E: Proteintech-CN@ptglab.com

W: ptgcn.com

This product is exclusively available under Proteintech Group brand and is not available to purchase from any other manufacturer.

Selected Validation Data



HepG2 cells were subjected to SDS PAGE followed by western blot with 55091-1-AP (PTCH2 antibody) at dilution of 1:500 incubated at room temperature for 1.5 hours.