

For Research Use Only

DRD2 Polyclonal antibody, PBS Only

Catalog Number: 55084-1-PBS

Featured Product



Basic Information

Catalog Number:

55084-1-PBS

Source:

Rabbit

Isotype:

IgG

GenBank Accession Number:

NM_016574

GeneID (NCBI):

1813

UNIPROT ID:

P14416

Full Name:

dopamine receptor D2

Calculated MW:

51 kDa

Observed MW:

50-60 kDa

Purification Method:

Antigen affinity purification

Applications

Tested Applications:

WB, IF-P, IF-Fro, IP, Indirect ELISA

Species Specificity:

human, mouse

Background Information

DRD2, also named D2DR and D2R, belongs to the G-protein coupled receptor 1 family. It is one of the five types (D1 to D5) of receptors for dopamine. The activity of DRD2 is mediated by G proteins which inhibit adenylyl cyclase. Defects in DRD2 are associated with dystonia type 11 (DYT11). The antibody is specific to DRD2.

Storage

Storage:

Store at -80°C.

The product is shipped with ice packs. Upon receipt, store it immediately at -80°C

Storage Buffer:

PBS only, pH7.3

For technical support and original validation data for this product please contact:

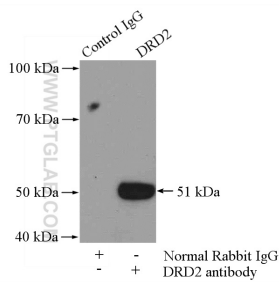
T: 4006900926

E: Proteintech-CN@ptglab.com

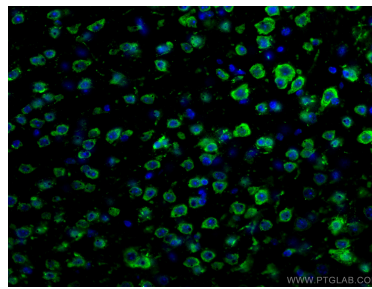
W: ptgcn.com

This product is exclusively available under Proteintech Group brand and is not available to purchase from any other manufacturer.

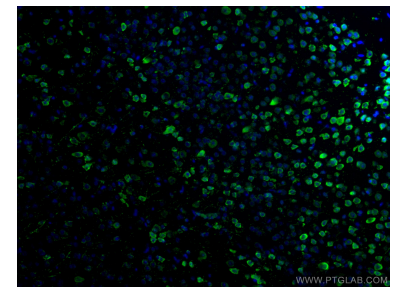
Selected Validation Data



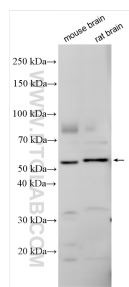
IP result of anti-DRD2 (IP:55084-1-AP, 4ug; Detection:55084-1-AP 1:300) with SH-SY5Y cells lysate 3000ug. This data was developed using the same antibody clone with 55084-1-PBS in a different storage buffer formulation.



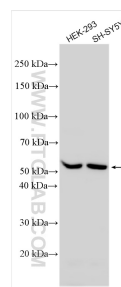
Immunofluorescent analysis of (4% PFA) fixed mouse brain tissue using DRD2 antibody (55084-1-AP) at dilution of 1:200 and CoraLite@488-Conjugated AffiniPure Goat Anti-Rabbit IgG(H+L). This data was developed using the same antibody clone with 55084-1-PBS in a different storage buffer formulation.



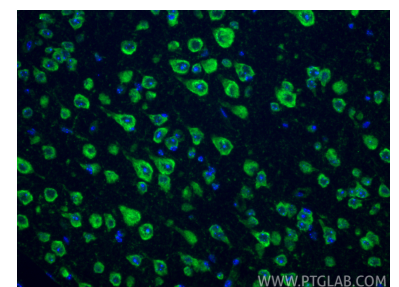
Immunofluorescent analysis of (4% PFA) fixed mouse brain tissue using DRD2 antibody (55084-1-AP) at dilution of 1:200 and CoraLite@488-Conjugated AffiniPure Goat Anti-Rabbit IgG(H+L). This data was developed using the same antibody clone with 55084-1-PBS in a different storage buffer formulation.



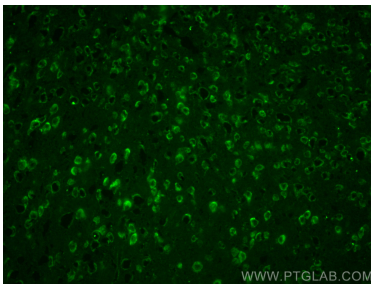
Various lysates were subjected to SDS PAGE followed by western blot with 55084-1-AP (DRD2 antibody) at dilution of 1:2000 incubated at room temperature for 1.5 hours. This data was developed using the same antibody clone with 55084-1-PBS in a different storage buffer formulation.



Various lysates were subjected to SDS PAGE followed by western blot with 55084-1-AP (DRD2 antibody) at dilution of 1:2000 incubated at room temperature for 1.5 hours. This data was developed using the same antibody clone with 55084-1-PBS in a different storage buffer formulation.



Immunofluorescent analysis of (4% PFA) fixed paraffin-embedded mouse brain tissue using DRD2 antibody (55084-1-AP) at dilution of 1:200 and CoraLite@488-Conjugated AffiniPure Goat Anti-Rabbit IgG(H+L) (SA00013-2). Heat mediated antigen retrieval with Tris-EDTA buffer (pH 9.0). This data was developed using the same antibody clone with 55084-1-PBS in a different storage buffer formulation.



Immunofluorescent analysis of (4% PFA) fixed frozen OCT-embedded mouse brain tissue using 55084-1-AP (DRD2 antibody) at dilution of 1:200 and CoraLite@488-Conjugated AffiniPure Goat Anti-Rabbit IgG(H+L). This data was developed using the same antibody clone with 55084-1-PBS in a different storage buffer formulation.