

For Research Use Only

# DRD2 Polyclonal antibody

Catalog Number: 55084-1-AP

Featured Product

38 Publications



## Basic Information

### Catalog Number:

55084-1-AP

### Concentration:

700 ug/ml

### Source:

Rabbit

### Isotype:

IgG

### GenBank Accession Number:

NM\_016574

### GeneID (NCBI):

1813

### UNIPROT ID:

P14416

### Full Name:

dopamine receptor D2

### Calculated MW:

51 kDa

### Observed MW:

50-60 kDa

### Purification Method:

Antigen affinity purification

### Recommended Dilutions:

WB 1:1000-1:8000

IP 0.5-4.0 ug for 1.0-3.0 mg of total protein lysate

IF-P 1:50-1:500

IF-Fro 1:50-1:500

## Applications

### Tested Applications:

WB, IF-P, IF-Fro, IP, ELISA

### Cited Applications:

WB, IHC, IF

### Species Specificity:

human, mouse

### Cited Species:

human, mouse, rat

### Positive Controls:

WB : SH-SY5Y cells, mouse brain tissue

IP : SH-SY5Y cells,

IF-P : mouse brain tissue,

IF-Fro : mouse brain tissue,

## Background Information

DRD2, also named D2DR and D2R, belongs to the G-protein coupled receptor 1 family. It is one of the five types (D1 to D5) of receptors for dopamine. The activity of DRD2 is mediated by G proteins which inhibit adenylyl cyclase. Defects in DRD2 are associated with dystonia type 11 (DYT11). The antibody is specific to DRD2.

## Notable Publications

Author	Pubmed ID	Journal	Application
Subramaniam Jayanthi	36077488	Int J Mol Sci	
Qing Han	36288554	Endocrinology	
Youjun Yang	36279723	Biomed Pharmacother	IHC

## Storage

### Storage:

Store at -20°C. Stable for one year after shipment.

### Storage Buffer:

PBS with 0.02% sodium azide and 50% glycerol, pH7.3

Aliquoting is unnecessary for -20°C storage

For technical support and original validation data for this product please contact:

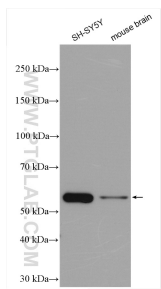
T: 4006900926

E: [Proteintech-CN@ptglab.com](mailto:Proteintech-CN@ptglab.com)

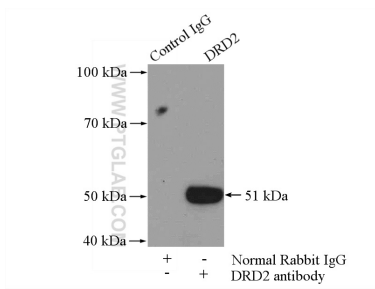
W: [ptgcn.com](http://ptgcn.com)

This product is exclusively available under Proteintech Group brand and is not available to purchase from any other manufacturer.

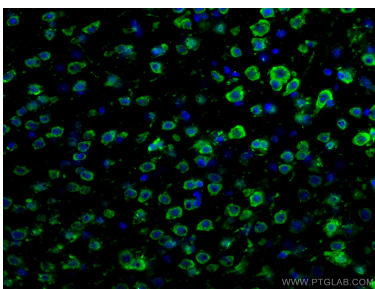
Selected Validation Data



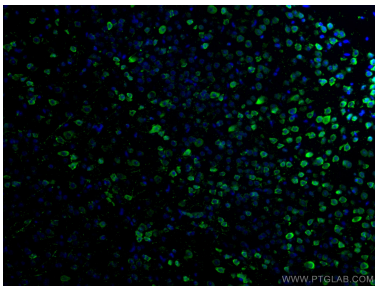
Various lysates were subjected to SDS PAGE followed by western blot with 55084-1-AP (DRD2 antibody) at dilution of 1:4000 incubated at room temperature for 1.5 hours.



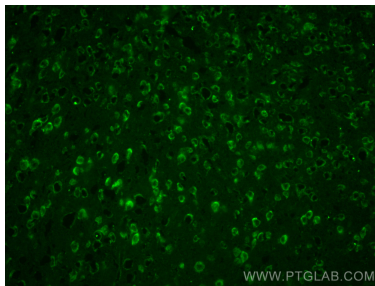
IP result of anti-DRD2 (IP:55084-1-AP, 4ug; Detection:55084-1-AP 1:300) with SH-SY5Y cells lysate 3000ug.



Immunofluorescent analysis of (4% PFA) fixed mouse brain tissue using DRD2 antibody (55084-1-AP) at dilution of 1:200 and CoraLite®488-Conjugated AffiniPure Goat Anti-Rabbit IgG(H+L).



Immunofluorescent analysis of (4% PFA) fixed mouse brain tissue using DRD2 antibody (55084-1-AP) at dilution of 1:200 and CoraLite®488-Conjugated AffiniPure Goat Anti-Rabbit IgG(H+L).



Immunofluorescent analysis of (4% PFA) fixed frozen OCT-embedded mouse brain tissue using 55084-1-AP (DRD2 antibody) at dilution of 1:200 and CoraLite®488-Conjugated AffiniPure Goat Anti-Rabbit IgG(H+L).