

For Research Use Only

SHANK1 Polyclonal antibody

Catalog Number: 55059-1-AP **2 Publications**



Basic Information

Catalog Number:

55059-1-AP

Size:

1000 µg/ml

Source:

Rabbit

Isotype:

IgG

GenBank Accession Number:

NM_016148

GeneID (NCBI):

50944

UNIPROT ID:

Q9Y566

Full Name:

SH3 and multiple ankyrin repeat domains 1

Calculated MW:

225 kDa

Observed MW:

159-225 kDa

Purification Method:

Antigen affinity purification

Recommended Dilutions:

WB 1:500-1:1000

IF 1:50-1:500

Applications

Tested Applications:

IF-P, WB, ELISA

Cited Applications:

WB

Species Specificity:

human, mouse, rat

Cited Species:

mouse, rat

Positive Controls:

WB : HEK-293T cells, Neuro-2a cells

IF : mouse eye tissue,

Background Information

SHANK1 belongs to the SHANK family. It seems to be an adapter protein in the postsynaptic density (PSD) of excitatory synapses that interconnects receptors of the postsynaptic membrane including NMDA-type and metabotropic glutamate receptors via complexes with GKAP/PSD-95 and Homer, respectively, and the actin-based cytoskeleton. SHANK1 may play a role in the structural and functional organization of the dendritic spine and synaptic junction. The antibody is specific to SHANK1.

Notable Publications

Author	Pubmed ID	Journal	Application
Zeyu Zhang	30297870	Cell Res	WB
Shan Hui	29171433	Neural Regen Res	WB

Storage

Storage:

Store at -20°C. Stable for one year after shipment.

Storage Buffer:

PBS with 0.02% sodium azide and 50% glycerol pH 7.3.

Aliquoting is unnecessary for -20°C storage

For technical support and original validation data for this product please contact:

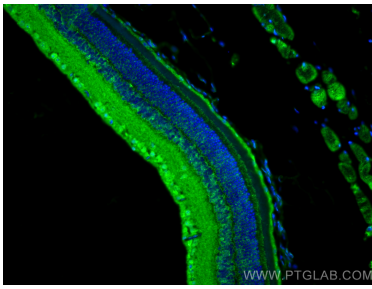
T: 4006900926

E: Proteintech-CN@ptglab.com

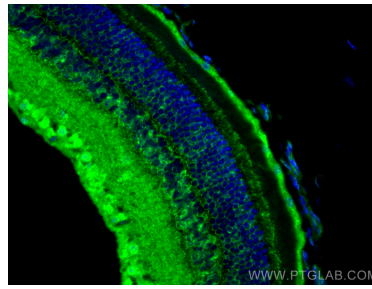
W: ptgcn.com

This product is exclusively available under Proteintech Group brand and is not available to purchase from any other manufacturer.

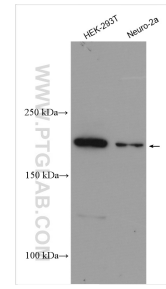
Selected Validation Data



Immunofluorescent analysis of (4% PFA) fixed mouse eye tissue using SHANK1 antibody (55059-1-AP) at dilution of 1:200 and CoraLite®488-Conjugated AffiniPure Goat Anti-Rabbit IgG(H+L).



Immunofluorescent analysis of (4% PFA) fixed mouse eye tissue using SHANK1 antibody (55059-1-AP) at dilution of 1:200 and CoraLite®488-Conjugated AffiniPure Goat Anti-Rabbit IgG(H+L).



Various lysates were subjected to SDS PAGE followed by western blot with 55059-1-AP (SHANK1 antibody) at dilution of 1:800 incubated at room temperature for 1.5 hours.