

For Research Use Only

GSX1 Polyclonal antibody

Catalog Number: 55050-1-AP



Basic Information

Catalog Number:

55050-1-AP

Size:

1500 µg/ml

Source:

Rabbit

Isotype:

IgG

GenBank Accession Number:

NM_145657

GeneID (NCBI):

219409

UNIPROT ID:

Q9H4S2

Full Name:

GS homeobox 1

Calculated MW:

28 kDa

Observed MW:

25-28 kDa

Purification Method:

Antigen affinity purification

Recommended Dilutions:

WB 1:500-1:1000

Applications

Tested Applications:

WB, ELISA

Species Specificity:

human, mouse, rat

Positive Controls:

WB : mouse liver tissue,

Background Information

GSX1, also named as GSH1, belongs to the Antp homeobox family. It is probable transcription factor that binds to the DNA sequence 5'-GC[TA][AC]ATTA[GA]-3'. GSX1 activates the transcription of the GHRH gene. It plays an important role in pituitary development. The antibody is specific to GSX1.

Storage

Storage:

Store at -20°C.

Storage Buffer:

PBS with 0.02% sodium azide and 50% glycerol pH 7.3.

Aliquoting is unnecessary for -20°C storage

For technical support and original validation data for this product please contact:

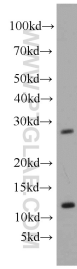
T: 4006900926

E: Proteintech-CN@ptglab.com

W: ptgcn.com

This product is exclusively available under Proteintech Group brand and is not available to purchase from any other manufacturer.

Selected Validation Data



mouse liver tissue were subjected to SDS PAGE followed by western blot with 55050-1-AP (GSX1 antibody) at dilution of 1:500 incubated at room temperature for 1.5 hours.