

For Research Use Only

# GFRA2 Polyclonal antibody

Catalog Number: 55038-1-AP



## Basic Information

<b>Catalog Number:</b> 55038-1-AP	<b>GenBank Accession Number:</b> NM_001495	<b>Purification Method:</b> Antigen affinity purification
<b>Concentration:</b> 300 ug/ml	<b>GeneID (NCBI):</b> 2675	<b>Recommended Dilutions:</b> WB 1:200-1:1000 IHC 1:50-1:500
<b>Source:</b> Rabbit	<b>UNIPROT ID:</b> O00451	
<b>Isotype:</b> IgG	<b>Full Name:</b> GDNF family receptor alpha 2	
	<b>Calculated MW:</b> 52 kDa	
	<b>Observed MW:</b> 41-45 kDa	

## Applications

<b>Tested Applications:</b> WB, IHC, ELISA	<b>Positive Controls:</b>
<b>Species Specificity:</b> human, mouse	<b>WB :</b> human placenta tissue, <b>IHC :</b> human lung cancer tissue,
<b>Note-IHC:</b> suggested antigen retrieval with <b>TE buffer pH 9.0; (*) Alternatively, antigen retrieval may be performed with citrate buffer pH 6.0</b>	

## Background Information

GFRA2, also named as GDNFRB, RETL2 and TRNR2, belongs to the GDNFR family. It is a receptor for neurturin. GFRA2 mediates the NRTN-induced autophosphorylation and activation of the RET receptor. It is a potent survival factor for central dopaminergic neurons, motor neurons, and several other populations of neurons in the central and peripheral nervous systems. The GDNF signal is mediated by a complex of the receptor tyrosine kinase RET and a glycosylphosphatidylinositol (GPI)-linked protein, GDNFRA. GFRA2 has three isoforms with MW 34-36 kDa, 39-41 kDa and 50-52 kDa. This antibody is specific to GFRA2.

## Storage

**Storage:**  
Store at -20°C. Stable for one year after shipment.  
**Storage Buffer:**  
PBS with 0.02% sodium azide and 50% glycerol, pH7.3  
Aliquoting is unnecessary for -20°C storage

For technical support and original validation data for this product please contact:

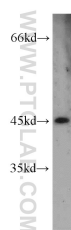
T: 4006900926

E: [Proteintech-CN@ptglab.com](mailto:Proteintech-CN@ptglab.com)

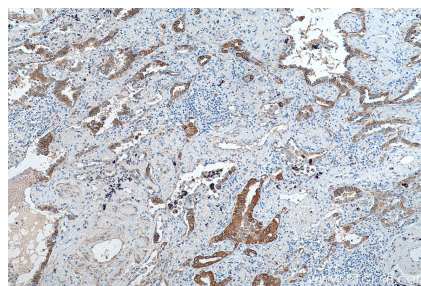
W: [ptgcn.com](http://ptgcn.com)

This product is exclusively available under Proteintech Group brand and is not available to purchase from any other manufacturer.

## Selected Validation Data



human placenta tissue were subjected to SDS PAGE followed by western blot with 55038-1-AP (GFRA2 antibody) at dilution of 1:200 incubated at room temperature for 1.5 hours.



Immunohistochemical analysis of paraffin-embedded human lung cancer tissue slide using 55038-1-AP (GFRA2 antibody) at dilution of 1:200 (under 10x lens). Heat mediated antigen retrieval with Tris-EDTA buffer (pH 9.0).