

For Research Use Only

# Synaptotagmin-12 Polyclonal antibody, PBS Only

Catalog Number: 55015-1-PBS



## Basic Information

Catalog Number:

55015-1-PBS

Source:

Rabbit

Isotype:

IgG

GenBank Accession Number:

NM\_177963

GeneID (NCBI):

91683

UNIPROT ID:

Q8IV01

Full Name:

synaptotagmin XII

Calculated MW:

47 kDa

Observed MW:

47 kDa

Purification Method:

Antigen affinity purification

## Applications

Tested Applications:

WB, Indirect ELISA

Species Specificity:

human, mouse

## Background Information

SYT12 belongs to the synaptotagmin family. It may be involved in Ca<sup>2+</sup>-dependent exocytosis of secretory vesicles through Ca<sup>2+</sup> and phospholipid binding to the C2 domain or may serve as Ca<sup>2+</sup> sensors in the process of vesicular trafficking and exocytosis. The antibody is specific to STY12.

## Storage

Storage:

Store at -80°C.

**The product is shipped with ice packs. Upon receipt, store it immediately at -80°C**

Storage Buffer:

PBS only, pH7.3

For technical support and original validation data for this product please contact:

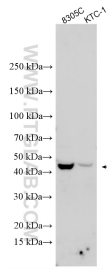
T: 4006900926

E: [Proteintech-CN@ptglab.com](mailto:Proteintech-CN@ptglab.com)

W: [ptgcn.com](http://ptgcn.com)

**This product is exclusively available under Proteintech Group brand and is not available to purchase from any other manufacturer.**

## Selected Validation Data



Various lysates were subjected to SDS PAGE followed by western blot with 55015-1-AP (Synaptotagmin-12 antibody) at dilution of 1:500 incubated at room temperature for 1.5 hours. This data was developed using the same antibody clone with 55015-1-PBS in a different storage buffer formulation.