

For Research Use Only

# c-MAF Polyclonal antibody, PBS Only

Catalog Number: 55013-1-PBS

Featured Product



## Basic Information

**Catalog Number:**

55013-1-PBS

**Concentration:**

1 mg/ml

**Source:**

Rabbit

**Isotype:**

IgG

**GenBank Accession Number:**

NM\_005360

**GeneID (NCBI):**

4094

**UNIPROT ID:**

O75444

**Full Name:**

v-maf musculoaponeurotic  
fibrosarcoma oncogene homolog  
(avian)

**Calculated MW:**

42 kDa

**Observed MW:**

42-52 kDa

**Purification Method:**

Antigen affinity purification

## Applications

**Tested Applications:**

WB, IF/ICC, IP, Indirect ELISA

**Species Specificity:**

human, mouse, rat

## Background Information

MAF, also named as c-Maf, belongs to the bZIP family and Maf subfamily. MAF acts as a transcriptional activator or repressor. It is involved in embryonic lens fiber cell development. MAF increases T cell susceptibility to apoptosis by interacting with MYB and decreasing BCL2 expression. Together with PAX6, it transactivates strongly the glucagon gene promoter through the G1 element. MAF activates transcription of the CD13 proximal promoter in endothelial cells. It is involved in the initial chondrocyte terminal differentiation and the disappearance of hypertrophic chondrocytes during endochondral bone development. When overexpressed, MAF represses anti-oxidant response element (ARE)-mediated transcription. It is involved either as an oncogene or as a tumor suppressor, depending on the cell context. A chromosomal aberration involving MAF is found in some forms of multiple myeloma (MM). Defects in MAF are the cause of cataract pulverulent juvenile-onset MAF-related (CAPJOM). Defects in MAF are the cause of cataract congenital cerulean type 4 (CCA4). The antibody is specific to MAF. And it could recognise the 50 kDa band that also be detected in the paper (PMID: 25770584).

## Storage

**Storage:**

Store at -80°C.

**The product is shipped with ice packs. Upon receipt, store it immediately at -80°C**

**Storage Buffer:**

PBS only, pH7.3

For technical support and original validation data for this product please contact:

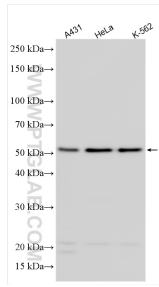
T: 4006900926

E: Proteintech-CN@ptglab.com

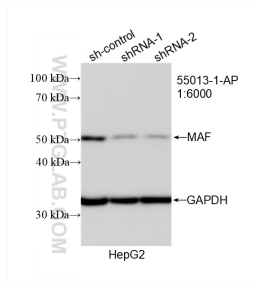
W: ptgcn.com

**This product is exclusively available under Proteintech Group brand and is not available to purchase from any other manufacturer.**

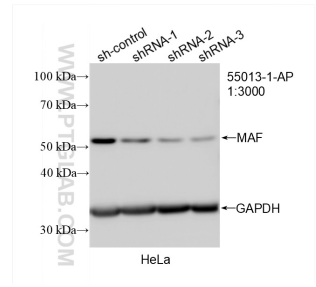
## Selected Validation Data



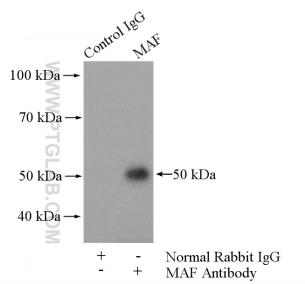
Various lysates were subjected to SDS PAGE followed by western blot with 55013-1-AP (c-MAF antibody) at dilution of 1:4000 incubated at room temperature for 1.5 hours. This data was developed using the same antibody clone with 55013-1-PBS in a different storage buffer formulation.



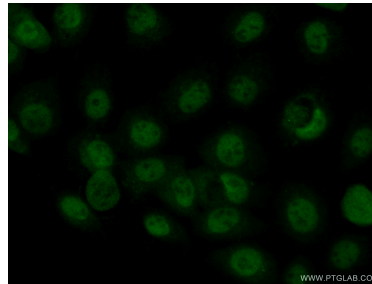
WB result of c-MAF antibody (55013-1-AP; 1:6000; incubated at room temperature for 1.5 hours) with sh-Control and sh-MAF transfected HepG2 cells. This data was developed using the same antibody clone with 55013-1-PBS in a different storage buffer formulation.



WB result of c-MAF antibody (55013-1-AP; 1:3000; incubated at room temperature for 1.5 hours) with sh-Control and sh-MAF transfected HeLa cells. This data was developed using the same antibody clone with 55013-1-PBS in a different storage buffer formulation.



IP result of anti-c-MAF (IP:55013-1-AP, 4ug; Detection:55013-1-AP 1:500) with A431 cells lysate 2000ug. This data was developed using the same antibody clone with 55013-1-PBS in a different storage buffer formulation.



Immunofluorescent analysis of (10% Formaldehyde) fixed A431 cells using 55013-1-AP (c-MAF antibody) at dilution of 1:50 and Alexa Fluor 488-conjugated AffiniPure Goat Anti-Rabbit IgG(H+L). This data was developed using the same antibody clone with 55013-1-PBS in a different storage buffer formulation.