

ATP6V1A Polyclonal antibody

Catalog Number: 51152-1-AP

Basic Information

Catalog Number:

51152-1-AP

Size:

350 µg/ml

Source:

Rabbit

Isotype:

IgG

GenBank Accession Number:

NM_001690

GeneID (NCBI):

523

UNIPROT ID:

P38606

Full Name:

ATPase, H⁺ transporting, lysosomal

70kDa, V1 subunit A

Calculated MW:

68 kDa

Observed MW:

68 kDa

Purification Method:

Antigen affinity purification

Recommended Dilutions:

WB 1:500-1:1000

IHC 1:20-1:200

Applications

Tested Applications:

IHC, WB, ELISA

Species Specificity:

human, mouse

Note-IHC: suggested antigen retrieval with TE buffer pH 9.0; (*) Alternatively, antigen retrieval may be performed with citrate buffer pH 6.0

Positive Controls:

WB : HeLa cells, HEK-293 cells, human brain tissue, mouse kidney tissue

IHC : human testis tissue,

Background Information

The vacuolar-type H⁽⁺⁾-ATPase (V-ATPase) is responsible for the acidification of endosomes, lysosomes, and other intracellular organelles. It is also involved in hydrogen ion transport across the plasma membrane into the extracellular space. The V-ATPase is a multisubunit complex with cytosolic and transmembrane domains. The cytosolic catalytic domain consists of 3 A subunits and 3 B subunits, which bind and hydrolyze ATP, as well as regulatory accessory subunits. ATP6V1A is V-type proton ATPase catalytic subunit A. This antibody is specific to ATP6V1A.

Storage

Storage:

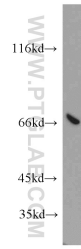
Store at -20°C. Stable for one year after shipment.

Storage Buffer:

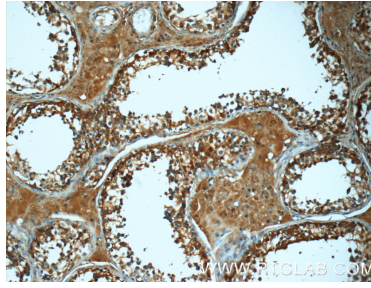
PBS with 0.02% sodium azide and 50% glycerol pH 7.3.

Aliquoting is unnecessary for -20°C storage

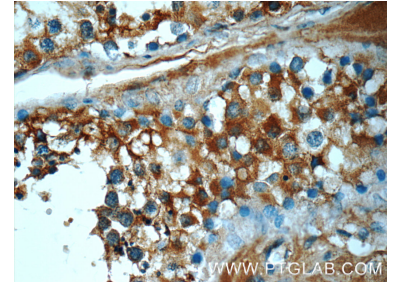
Selected Validation Data



HeLa cells were subjected to SDS PAGE followed by western blot with 51152-1-AP (ATP6V1A antibody) at dilution of 1:500 incubated at room temperature for 1.5 hours.



Immunohistochemical analysis of paraffin-embedded human testis tissue slide using 51152-1-AP (ATP6V1A Antibody) at dilution of 1:50 (under 10x lens).



Immunohistochemical analysis of paraffin-embedded human testis tissue slide using 51152-1-AP (ATP6V1A Antibody) at dilution of 1:50 (under 40x lens).