

KLHL14 Polyclonal antibody

Catalog Number: 51131-1-AP

Basic Information

Catalog Number:

51131-1-AP

Size:

150 µg/ml

Source:

Rabbit

Isotype:

IgG

GenBank Accession Number:

BC021267

GeneID (NCBI):

57565

UNIPROT ID:

Q9P2G3

Full Name:

kelch-like 14 (Drosophila)

Calculated MW:

44 kDa, 71 kDa

Observed MW:

55 kDa, 70 kDa

Purification Method:

Antigen affinity purification

Recommended Dilutions:

WB 1:500-1:2000

IHC 1:20-1:200

Applications

Tested Applications:

IHC, WB, ELISA

Species Specificity:

human

Note-IHC: suggested antigen retrieval with *TE buffer pH 9.0*; (*) Alternatively, antigen retrieval may be performed with *citrate buffer pH 6.0*

Positive Controls:

WB : HEK-293 cells,

IHC : human ovary tumor tissue,

Background Information

Storage

Storage:

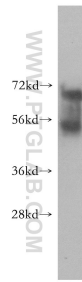
Store at -20°C.

Storage Buffer:

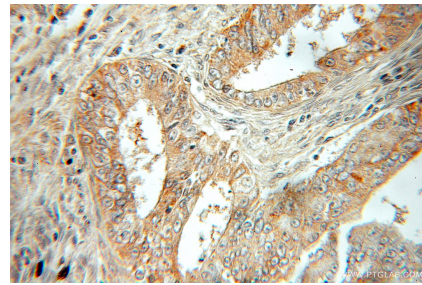
PBS with 0.02% sodium azide and 50% glycerol pH 7.3.

Aliquoting is unnecessary for -20°C storage

Selected Validation Data



HEK-293 cells were subjected to SDS PAGE followed by western blot with 51131-1-AP (KLHL14 antibody) at dilution of 1:0 incubated at room temperature for 1.5 hours.



Immunohistochemical analysis of paraffin-embedded human ovary tumor using 51131-1-AP (KLHL14 antibody) at dilution of 1:50 (under 10x lens).