

HER2/ErbB2 Polyclonal antibody

Catalog Number: 51105-1-AP

Basic Information

Catalog Number:

51105-1-AP

Size:

300 µg/ml

Source:

Rabbit

Isotype:

IgG

GenBank Accession Number:

BC167147

GeneID (NCBI):

2064

UNIPROT ID:

P04626

Full Name:

v-erb-b2 erythroblastic leukemia
viral oncogene homolog 2,
neuro/glioblastoma derived
oncogene homolog (avian)

Calculated MW:

185 kDa

Observed MW:

185 kDa

Purification Method:

Antigen affinity purification

Recommended Dilutions:

WB 1:500-1:2000

IP 0.5-4.0 µg for 1.0-3.0 mg of total
protein lysate

IHC 1:20-1:200

IF/ICC 1:20-1:200

Applications

Tested Applications:

WB, IP, IHC, IF/ICC, ELISA

Species Specificity:

human

**Note-IHC: suggested antigen retrieval with
TE buffer pH 9.0; (*) Alternatively, antigen
retrieval may be performed with citrate
buffer pH 6.0**

Positive Controls:

WB: HeLa cells, MCF-7 cells

IP: SK-BR-3 cells,

IHC: human breast cancer tissue, Breast Cancer slides

IF/ICC: HeLa cells,

Background Information

HER2, also known as ErbB2 and Neu, is a 185-kDa transmembrane glycoprotein that is a member of the EGF receptor family of receptor tyrosine kinases. It has no ligand binding domain of its own. However, it does bind tightly to other ligand-bound EGF receptor family members to form a heterodimer, stabilizing ligand binding and enhancing kinase-mediated activation of downstream signalling pathways, such as those involving mitogen-activated protein kinase and phosphatidylinositol-3 kinase. Amplification and/or overexpression of HER2 have been reported in numerous cancers, including breast and ovarian tumors. HER2 is a therapeutic target for the treatment of breast cancer and other carcinomas.

Storage

Storage:

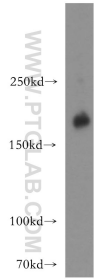
Store at -20°C. Stable for one year after shipment.

Storage Buffer:

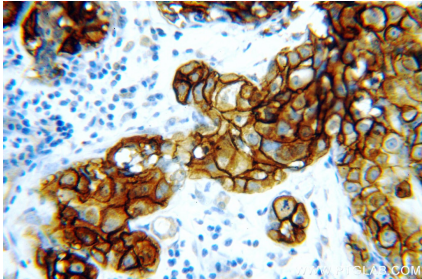
PBS with 0.02% sodium azide and 50% glycerol pH 7.3.

Aliquoting is unnecessary for -20°C storage

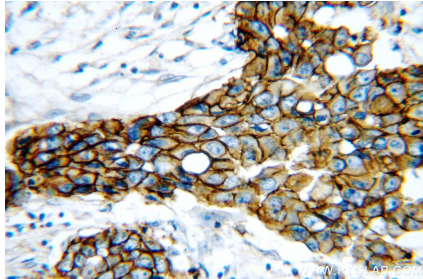
Selected Validation Data



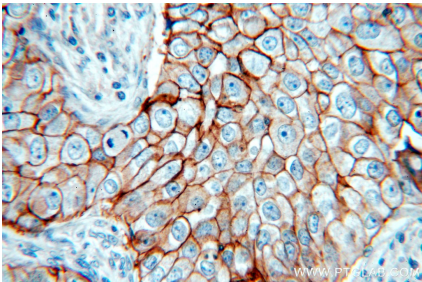
HeLa cells were subjected to SDS PAGE followed by western blot with 51105-1-AP (HER2/ErbB2 antibody) at dilution of 1:300 incubated at room temperature for 1.5 hours.



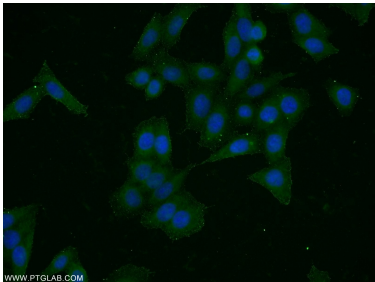
Immunohistochemical analysis of paraffin-embedded human breast cancer using 51105-1-AP (HER2/ErbB2 antibody) at dilution of 1:50 (under 40x lens).



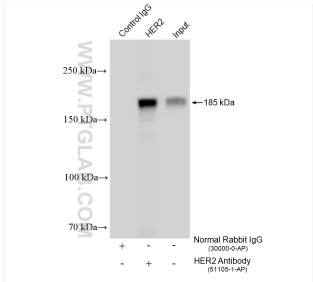
Immunohistochemical analysis of paraffin-embedded human breast cancer using 51105-1-AP (HER2/ErbB2 antibody) at dilution of 1:50 (under 40x lens).



Immunohistochemical analysis of paraffin-embedded human breast cancer using 51105-1-AP (HER2/ErbB2 antibody) at dilution of 1:50 (under 40x lens).



Immunofluorescent analysis of HeLa cells using 51105-1-AP (HER2/ErbB2 antibody) at dilution of 1:50 and Alexa Fluor 488-conjugated AffiniPure Goat Anti-Rabbit IgG(H+L).



IP result of anti-HER2/ErbB2 (IP:51105-1-AP, 4ug; Detection:51105-1-AP 1:500) with SK-BR-3 cells lysate 1280 ug.