

MEK1-Specific Polyclonal antibody

Catalog Number: 51080-1-AP

8 Publications

Basic Information

Catalog Number:

51080-1-AP

Size:

300 µg/ml

Source:

Rabbit

Isotype:

IgG

GenBank Accession Number:

BC139729

GeneID (NCBI):

5604

ENSEMBL Gene ID:

ENSG00000169032

UNIPROT ID:

Q02750

Full Name:

mitogen-activated protein kinase
kinase 1

Calculated MW:

43 kDa

Purification Method:

Antigen affinity purification

Recommended Dilutions:

IHC 1:20-1:200

Applications

Tested Applications:

IHC, ELISA

Cited Applications:

WB

Species Specificity:

human

Cited Species:

human, mouse, Eriocheir sinensis

Positive Controls:

IHC : human endometrial cancer tissue, human colon
tissue

**Note-IHC: suggested antigen retrieval with
TE buffer pH 9.0; (*) Alternatively, antigen
retrieval may be performed with citrate
buffer pH 6.0**

Background Information

MEK1 is also named as MAP2K1 (mitogen-activated protein kinase kinase 1), MAPKK1, PRKMK1, MKK1 and belongs to the MAP kinase kinase subfamily. It is a dual-specificity kinase that mediate ERK1 and ERK2 activation during adhesion and growth factor signaling (PMID:19219045). It also plays an essential role in extra-embryonic ectoderm during placentogenesis. MEK1 has 2 isoforms produced by alternative splicing with the molecular weight of 43 kDa and 41 kDa. It can be phosphorylated (PMID:21144847). This antibody is specific to MEK1.

Notable Publications

Author	Pubmed ID	Journal	Application
Xiaochuan Zheng	33197858	Comp Biochem Physiol Part D Genomics Proteomics	WB
Wei Li	35042538	Cancer Cell Int	WB
Pengchao Zheng	32021289	Onco Targets Ther	WB

Storage

Storage:

Store at -20°C. Stable for one year after shipment.

Storage Buffer:

PBS with 0.02% sodium azide and 50% glycerol pH 7.3.

Aliquoting is unnecessary for -20°C storage

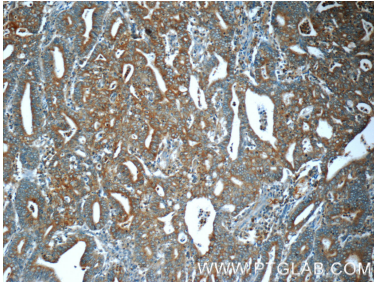
For technical support and original validation data for this product please contact:

T: 4006900926

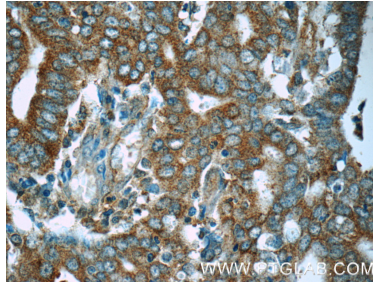
E: Proteintech-CN@ptglab.comW: ptgcn.com

**This product is exclusively available under Proteintech
Group brand and is not available to purchase from any
other manufacturer.**

Selected Validation Data



Immunohistochemical analysis of paraffin-embedded human endometrial cancer tissue slide using 51080-1-AP (MEK1-Specific antibody) at dilution of 1:50 (under 10x lens).



Immunohistochemical analysis of paraffin-embedded human endometrial cancer tissue slide using 51080-1-AP (MEK1-Specific antibody) at dilution of 1:50 (under 40x lens).