

For Research Use Only

# EGFR (C-terminal) Polyclonal antibody

Catalog Number: 51071-2-AP

27 Publications



## Basic Information

### Catalog Number:

51071-2-AP

### Concentration:

4000 µg/ml

### Source:

Rabbit

### Isotype:

IgG

### GenBank Accession Number:

BC094761

### GeneID (NCBI):

1956

### UNIPROT ID:

P00533

### Full Name:

epidermal growth factor receptor  
(erythroblastic leukemia viral (v-erb-  
b) oncogene homolog, avian)

### Calculated MW:

1210 aa, 134 kDa

### Observed MW:

170 kDa

### Purification Method:

Antigen affinity purification

### Recommended Dilutions:

WB 1:500-1:2000

IP 0.5-4.0 µg for 1.0-3.0 mg of total  
protein lysate

IF/ICC 1:200-1:800

## Applications

### Tested Applications:

WB, IF/ICC, IP, ELISA

### Cited Applications:

WB, IHC, IF, CoIP

### Species Specificity:

human

### Cited Species:

human, mouse, pig

### Positive Controls:

WB : A431 cells, HeLa cells, L02 cells

IP : A431 cells,

IF/ICC : A431 cells,

## Background Information

EGFR, also named as ERBB1, is a cell-surface receptor for members of the epidermal growth factor family (EGF-family) of extracellular protein ligands. Binding of the protein to a ligand induces receptor dimerization and tyrosine autophosphorylation and leads to cell proliferation. The gene resides on chromosome 7p12, encoding a 170 kDa membrane-associated glycoprotein. Recent studies have shown EGFR plays a critical role in cancer development and progression, including cell proliferation, apoptosis, angiogenesis, and metastatic spread. Mutations in this gene are associated with lung cancer. The antibody is specific to isoform1.

## Notable Publications

Author	Pubmed ID	Journal	Application
Samusi Adediran	36230550	Cancers (Basel)	WB
Xiaojin Liu	36230833	Cancers (Basel)	WB
Minglu Liu	36467051	Front Pharmacol	WB

## Storage

### Storage:

Store at -20°C. Stable for one year after shipment.

### Storage Buffer:

PBS with 0.02% sodium azide and 50% glycerol pH 7.3.

Aliquoting is unnecessary for -20°C storage

For technical support and original validation data for this product please contact:

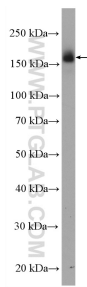
T: 4006900926

E: [Proteintech-CN@ptglab.com](mailto:Proteintech-CN@ptglab.com)

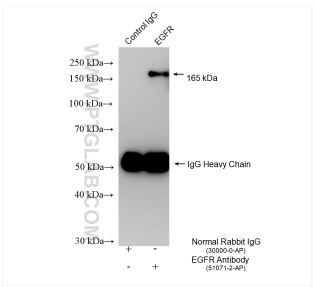
W: [ptgcn.com](http://ptgcn.com)

This product is exclusively available under Proteintech Group brand and is not available to purchase from any other manufacturer.

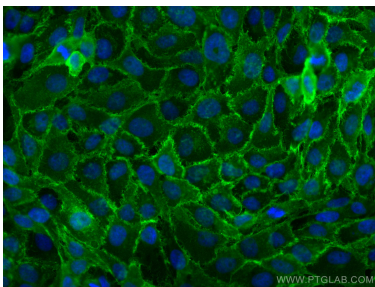
Selected Validation Data



A431 cells were subjected to SDS PAGE followed by western blot with 51071-2-AP (EGFR (C-terminal) antibody) at dilution of 1:1000 incubated at room temperature for 1.5 hours.



IP result of anti-EGFR (C-terminal) (IP:51071-2-AP, 4ug; Detection:51071-2-AP 1:30000) with A431 cells lysate 1200 ug.



Immunofluorescent analysis of (4% PFA) fixed A431 cells using EGFR (C-terminal) antibody (51071-2-AP) at dilution of 1:400 and CoraLite®488-Conjugated Goat Anti-Rabbit IgG(H+L).