

For Research Use Only

Galc Polyclonal antibody

Catalog Number: 51049-2-AP



Basic Information

| | | |
|--|--|--|
| Catalog Number: 51049-2-AP | GenBank Accession Number: BC086671 | Purification Method: Antigen affinity purification |
| Size: 167 µg/ml | GeneID (NCBI): 14420 | Recommended Dilutions: WB 1:500-1:1000 IHC 1:20-1:200 |
| Source: Rabbit | UNIPROT ID: P54818 | |
| Isotype: IgG | Full Name: galactosylceramidase | |
| Immunogen Catalog Number: AG0684 | Calculated MW: 77 kDa | |
| | Observed MW: 50-55 kDa | |

Applications

Tested Applications:

IHC, WB, ELISA

Species Specificity:

human, mouse, rat

Note-IHC: suggested antigen retrieval with TE buffer pH 9.0; (*) Alternatively, antigen retrieval may be performed with citrate buffer pH 6.0

Positive Controls:

WB : A375 cells, human brain tissue, human placenta tissue, mouse brain tissue

IHC : human prostate cancer tissue,

Background Information

GALC, also named as Galactosylceramidase, belongs to the glycosyl hydrolase 59 family. It hydrolyzes the galactose ester bonds of galactosylceramide, galactosylsphingosine, lactosylceramide, and monogalactosyldiglyceride. It is an enzyme with very low activity responsible for the lysosomal catabolism of galactosylceramide, a major lipid in myelin, kidney and epithelial cells of small intestine and colon. Normal GALC mRNA encodes the 80 kDa precursor, which is processed into 50 and 30 kDa subunits. (PMID:8634707)

Storage

Storage:

Store at -20°C.

Storage Buffer:

PBS with 0.02% sodium azide and 50% glycerol pH 7.3.

Aliquoting is unnecessary for -20°C storage

For technical support and original validation data for this product please contact:

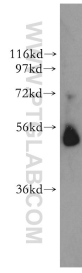
T: 4006900926

E: Proteintech-CN@ptglab.com

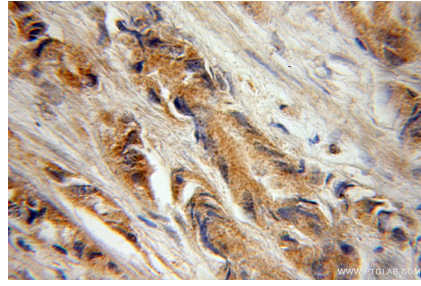
W: ptgcn.com

This product is exclusively available under Proteintech Group brand and is not available to purchase from any other manufacturer.

Selected Validation Data



A375 cells were subjected to SDS PAGE followed by western blot with 51049-2-AP (Galc antibody) at dilution of 1:300 incubated at room temperature for 1.5 hours.



Immunohistochemical analysis of paraffin-embedded human prostate cancer using 51049-2-AP (Galc antibody) at dilution of 1:50 (under 10x lens).