

For Research Use Only

TOM1L1 Polyclonal antibody, PBS Only

Catalog Number: 51017-1-PBS



Basic Information

Catalog Number: 51017-1-PBS	GenBank Accession Number: BC029396	Purification Method: Antigen affinity purification
Source: Rabbit	GeneID (NCBI): 10040	
Isotype: IgG	UNIPROT ID: O75674	
Immunogen Catalog Number: AG0502	Full Name: target of myb1 (chicken)-like 1	
	Calculated MW: 476 aa, 53 kDa	
	Observed MW: 53 kDa	

Applications

Tested Applications:
WB, ELISA

Species Specificity:
human

Background Information

Target of Myb-like protein 1 (TOM1L1), also known as Srcasm, belongs to the Tom family. TOM1L1 encodes an adaptor protein characterized by an N-terminal VHS domain and a central GAT domain, which facilitates interactions with clathrin and components of the endosomal sorting machinery. Functionally, TOM1L1 serves as a substrate for Src family kinases, playing a regulatory role in growth factor signaling and membrane trafficking. It is involved in endocytosis, signal transduction, and the negative regulation of mitotic cell division. (PMID: 17977829, PMID: 26899482, PMID: 35238864, PMID: 39548458)

Storage

Storage:
Store at -80°C.
The product is shipped with ice packs. Upon receipt, store it immediately at -80°C

Storage Buffer:
PBS only, pH7.3

For technical support and original validation data for this product please contact:

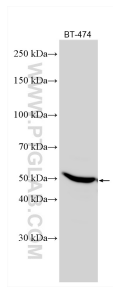
T: 4006900926

E: Proteintech-CN@ptglab.com

W: ptgcn.com

This product is exclusively available under Proteintech Group brand and is not available to purchase from any other manufacturer.

Selected Validation Data



BT-474 cells were subjected to SDS PAGE followed by western blot with 51017-1-AP (TOM1L1 antibody) at dilution of 1:2000 incubated at room temperature for 1.5 hours. This data was developed using the same antibody clone with 51017-1-PBS in a different storage buffer formulation.