

For Research Use Only

# TOM1L1 Polyclonal antibody

Catalog Number: 51017-1-AP **1 Publications**



## Basic Information

<b>Catalog Number:</b> 51017-1-AP	<b>GenBank Accession Number:</b> BC029396	<b>Purification Method:</b> Antigen affinity purification
<b>Size:</b> 133 µg/ml	<b>GeneID (NCBI):</b> 10040	<b>Recommended Dilutions:</b> WB 1:500-1:2000 IHC 1:20-1:200
<b>Source:</b> Rabbit	<b>UNIPROT ID:</b> O75674	
<b>Isotype:</b> IgG	<b>Full Name:</b> target of myb1 (chicken)-like 1	
<b>Immunogen Catalog Number:</b> AG0502	<b>Calculated MW:</b> 346 aa, 39 kDa	
	<b>Observed MW:</b> 53 kDa	

## Applications

<b>Tested Applications:</b> IHC, WB, ELISA	<b>Positive Controls:</b>
<b>Cited Applications:</b> IP, WB	<b>WB:</b> HeLa cells,
<b>Species Specificity:</b> human	<b>IHC:</b> human prostate cancer tissue,
<b>Cited Species:</b> human	

**Note-IHC: suggested antigen retrieval with TE buffer pH 9.0; (\*) Alternatively, antigen retrieval may be performed with citrate buffer pH 6.0**

## Background Information

### Notable Publications

Author	Pubmed ID	Journal	Application
Henriette U Balinda	35307409	Exp Cell Res	WB,IP

## Storage

**Storage:**  
Store at -20°C.  
**Storage Buffer:**  
PBS with 0.02% sodium azide and 50% glycerol pH 7.3.  
Aliquoting is unnecessary for -20°C storage

For technical support and original validation data for this product please contact:

T: 4006900926

E: Proteintech-CN@ptglab.com

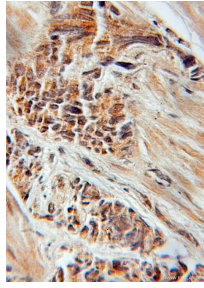
W: ptgcn.com

**This product is exclusively available under Proteintech Group brand and is not available to purchase from any other manufacturer.**

## Selected Validation Data



HeLa cells were subjected to SDS PAGE followed by western blot with 51017-1-AP (TOM1L1 antibody) at dilution of 1:500 incubated at room temperature for 1.5 hours.



Immunohistochemical analysis of paraffin-embedded human prostate cancer using 51017-1-AP (TOM1L1 antibody) at dilution of 1:50 (under 10x lens).