

For Research Use Only

GEFT Polyclonal antibody

Catalog Number: 51004-1-AP

Featured Product

3 Publications



Basic Information

Catalog Number:

51004-1-AP

Size:

133 µg/ml

Source:

Rabbit

Isotype:

IgG

GenBank Accession Number:

BC047559

GeneID (NCBI):

115557

UNIPROT ID:

Q86VW2

Full Name:

RhoA/RAC/CDC42 exchange factor

Calculated MW:

64 kDa

Observed MW:

70 kDa

Purification Method:

Antigen affinity purification

Recommended Dilutions:

WB 1:500-1:1000

Applications

Tested Applications:

WB, ELISA

Cited Applications:

WB

Species Specificity:

human, mouse, rat

Cited Species:

human, mouse, rat

Positive Controls:

WB : mouse brain tissue, rat brain tissues

Background Information

GEFT, also named as p63RhoGEF, may play a role in actin cytoskeleton reorganization in different tissues since its activation induces formation of actin stress fibers. It works as a guanine nucleotide exchange factor for Rho family of small GTPases. GETF links specifically G alpha q/11-coupled receptors to RHOA activation. GEFT may be an important regulator of processes involved in axon and dendrite formation. In neurons seems to be an exchange factor primarily for RAC1. It is involved in skeletal myogenesis. GEFT is expressed as three isoforms (64, 53 and 68kDa).

Notable Publications

Author	Pubmed ID	Journal	Application
Julia Strack	25389180	MBio	WB
Siegert Peter P	23696743	PLoS Pathog	WB
Momotani Ko K	21885830	Circ Res	WB

Storage

Storage:

Store at -20°C. Stable for one year after shipment.

Storage Buffer:

PBS with 0.02% sodium azide and 50% glycerol pH 7.3.

Aliquoting is unnecessary for -20°C storage

For technical support and original validation data for this product please contact:

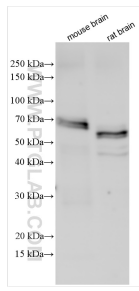
T: 4006900926

E: Proteintech-CN@ptglab.com

W: ptgcn.com

This product is exclusively available under Proteintech Group brand and is not available to purchase from any other manufacturer.

Selected Validation Data



Various lysates were subjected to SDS PAGE followed by western blot with 51004-1-AP (GEFT antibody) at dilution of 1:500 incubated at room temperature for 1.5 hours.