

For Research Use Only

LOC221710 Polyclonal antibody, PBS Only

Catalog Number: 34416-1-PBS



Basic Information

Catalog Number:

34416-1-PBS

Source:

Rabbit

Isotype:

IgG

Immunogen Catalog Number:

AG42308

GenBank Accession Number:

BC032356

GeneID (NCBI):

221710

UNIPROT ID:

PODJ93

Full Name:

hypothetical protein LOC221710

Observed MW:

19-23 kDa

Purification Method:

Antigen affinity Purification

Applications

Tested Applications:

WB, Indirect ELISA

Species Specificity:

human

Background Information

LOC221710 is a provisional gene annotation identifier used in human genomic databases (e.g., RefSeq/NCBI) to denote a predicted or poorly characterized locus for which functional annotation remains limited. Genes labeled with "LOC" typically arise from computational gene prediction, transcriptomic evidence, or incomplete cDNA characterization, and may represent protein-coding candidates, long non-coding RNAs (lncRNAs), or pseudogenes. For LOC221710, currently available data suggest that it lacks well-defined protein structure, biochemical function, and experimentally validated biological roles, and it has not yet been assigned an official gene symbol.

Storage

Storage:

Store at -80°C.

The product is shipped with ice packs. Upon receipt, store it immediately at -80°C

Storage Buffer:

PBS only, pH7.3

For technical support and original validation data for this product please contact:

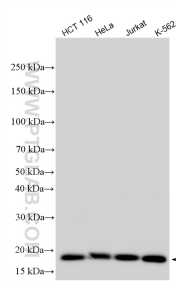
T: 4006900926

E: Proteintech-CN@ptglab.com

W: ptgcn.com

This product is exclusively available under Proteintech Group brand and is not available to purchase from any other manufacturer.

Selected Validation Data



Various lysates were subjected to SDS PAGE followed by western blot with 34416-1-AP (LOC221710 antibody) at dilution of 1:2000 incubated at room temperature for 1.5 hours. This data was developed using the same antibody clone with 34416-1-PBS in a different storage buffer formulation.