

For Research Use Only

# FOLR2 Polyclonal antibody

Catalog Number: 34328-1-AP



## Basic Information

<b>Catalog Number:</b> 34328-1-AP	<b>GenBank Accession Number:</b> NM_008035.2	<b>Purification Method:</b> Antigen affinity Purification
<b>Source:</b> Rabbit	<b>GeneID (NCBI):</b> 14276	<b>Recommended Dilutions:</b> WB: 1:500-1:3000
<b>Isotype:</b> IgG	<b>UNIPROT ID:</b> Q05685	
<b>Immunogen Catalog Number:</b> EG7561	<b>Full Name:</b> folate receptor 2 (fetal)	
	<b>Calculated MW:</b> 29 kDa	
	<b>Observed MW:</b> 30 kDa	

## Applications

<b>Tested Applications:</b> WB, ELISA	<b>Positive Controls:</b> WB : mouse brain tissue, rat brain tissue
<b>Species Specificity:</b> mouse, rat	

## Background Information

Folate receptor beta (FOLR2, also known as FR- $\beta$ ) is a glycosylphosphatidylinositol (GPI)-anchored cell surface folate-binding protein that mediates high-affinity uptake of reduced folates and folate conjugates. In mice, Folr2 is predominantly expressed in subsets of tissue-resident macrophages and monocyte/macrophage-lineage cells, rather than in most epithelial compartments. It is particularly enriched in alternatively activated (M2-like) macrophages, tumor-associated macrophages (TAMs), and macrophage populations associated with tissue remodeling, immune regulation, and chronic inflammation. Through facilitating folate internalization and reflecting a specialized macrophage activation state, FOLR2 is widely used as a marker for immunoregulatory macrophages in contexts such as tumor microenvironment, fibrosis, wound healing, and inflammatory disease.

## Storage

**Storage:**  
Store at -20°C. Stable for one year after shipment.  
**Storage Buffer:**  
PBS with 0.02% sodium azide and 50% glycerol, pH7.3  
Aliquoting is unnecessary for -20°C storage

For technical support and original validation data for this product please contact:

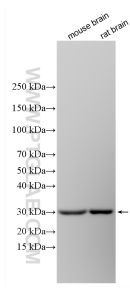
T: 4006900926

E: [Proteintech-CN@ptglab.com](mailto:Proteintech-CN@ptglab.com)

W: [ptgcn.com](http://ptgcn.com)

This product is exclusively available under Proteintech Group brand and is not available to purchase from any other manufacturer.

## Selected Validation Data



Various lysates were subjected to SDS PAGE followed by western blot with 34328-1-AP (FOLR2 antibody) at dilution of 1:1500 incubated at room temperature for 1.5 hours.